

Product datasheet for **CD564178**

Tissue Genomic DNA, Lung

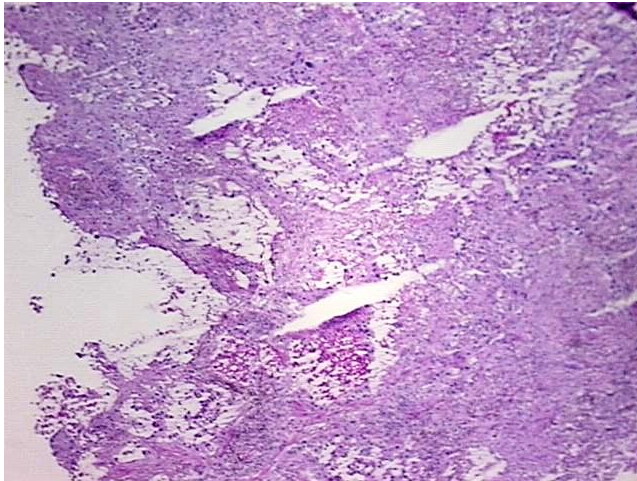
Product data:

Product Type:	Genomic DNA
Disease State:	Cancer
Diagnosis Category:	Lung Cancer
Tissue:	Lung
Frozen Sample ID:	FR00021F3D
Case ID:	CI0000007583
Prep:	A
Vial ID:	DN000002D9
Tissue of Origin:	Lung
Site of Finding:	Lung
Appearance:	Tumor
Sample Diagnosis (from Pathology Verification):	Carcinoma of lung, large cell
Normal:	10%
Lesional:	0%
Tumor:	60%
Tumor Hypo/Acellular Stroma:	0%
Tumor Hypercellular Stroma:	10%
Necrosis:	20%
Pathology Verification notes from H&E review:	tumor with squamous and glandular features
Bioanalyzer Ratio (28S/18S):	2.01

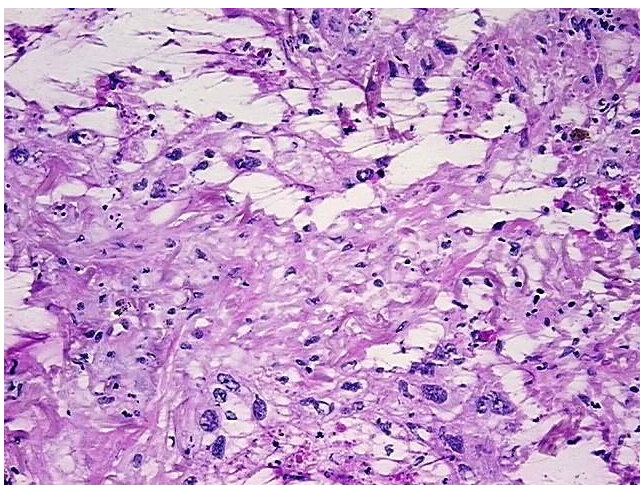

[View online »](#)

CASE Diagnosis (from medical center path report):	Carcinoma of lung, large cell
Age:	60
Gender:	Female
Race:	Black or African American
Tumor Grade:	AJCC G2: Moderately differentiated
Minimum Stage Grouping:	IA
T (Extent of Primary Tumor):	T1
N (Lymph node metastasis):	N0
M (Distant metastasis):	MX
Storage:	Store the total DNA -80°C.
Stability:	These products are stable for one year from date of shipping when stored at -80°C without repeated freeze/thaws.

Product images:



DNA - 4x.



DNA - 20x.



DNA PCR Image