

## Product datasheet for **CD564166**

### Tissue Genomic DNA, Lung

#### Product data:

Product Type:	Genomic DNA
Disease State:	Cancer
Diagnosis Category:	Lung Cancer
Tissue:	Lung
Frozen Sample ID:	FR5B33B97A
Case ID:	CI0000009502
Prep:	A
Vial ID:	DN000000E0
Tissue of Origin:	Lung
Site of Finding:	Lung
Appearance:	Tumor
Sample Diagnosis (from Pathology Verification):	Carcinoma of lung, squamous cell
Normal:	0%
Lesional:	0%
Tumor:	85%
Tumor Hypo/Acellular Stroma:	0%
Tumor Hypercellular Stroma:	14%
Necrosis:	1%
Pathology Verification notes from H&E review:	tumor stroma: focal prominent lymphoplasmacytic infiltrate
Bioanalyzer Ratio (28S/18S):	1.97


[View online »](#)

**CASE Diagnosis (from medical center path report):** Carcinoma of lung, squamous cell

**Age:** 79

**Gender:** Male

**Race:** White or Caucasian

**Tumor Grade:** AJCC G2: Moderately differentiated

**Minimum Stage Grouping:** IB

**T (Extent of Primary Tumor):** T2

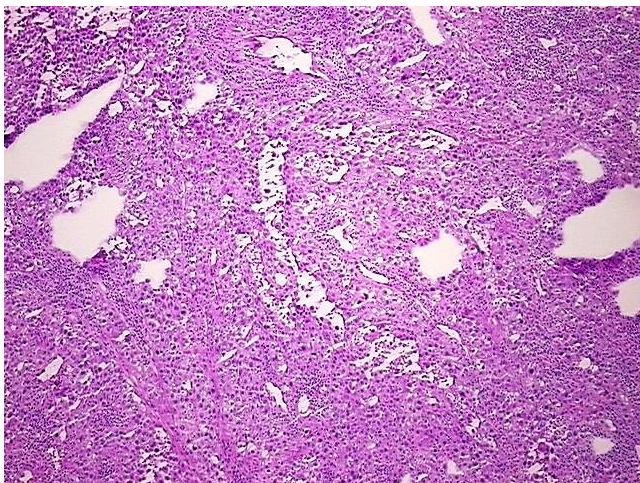
**N (Lymph node metastasis):** N0

**M (Distant metastasis):** MX

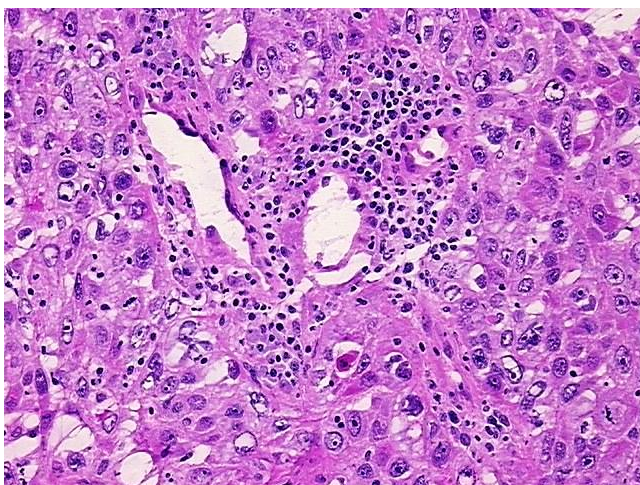
**Storage:** Store the total DNA -80°C.

**Stability:** These products are stable for one year from date of shipping when stored at -80°C without repeated freeze/thaws.

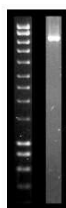
## Product images:



DNA - 4x.



DNA - 20x.



DNA PCR Image