

Product datasheet for **CD564148**

Tissue Genomic DNA, Liver

Product data:

Product Type:	Genomic DNA
Disease State:	Other Disease
Diagnosis Category:	Hepatitis
Tissue:	Liver
Frozen Sample ID:	FR00025680
Case ID:	CI0000009200
Prep:	B
Vial ID:	DN00000374
Tissue of Origin:	Liver
Site of Finding:	Liver
Appearance:	Lesional
Sample Diagnosis (from Pathology Verification):	Hepatitis, chronic
Normal:	0%
Lesional:	100%
Tumor:	0%
Tumor Hypo/Acellular Stroma:	0%
Tumor Hypercellular Stroma:	0%
Necrosis:	0%
Pathology Verification notes from H&E review:	chronic hepatitis. portal tracts contain moderate lymphoplasmacytic infiltrate. 95% lobules, 5% triads
Bioanalyzer Ratio (28S/18S):	1.95


[View online »](#)

CASE Diagnosis (from medical center path report): Carcinoma of liver, hepatocellular

Age: 68

Gender: Male

Race: White or Caucasian

Tumor Grade: Not Reported

Minimum Stage Grouping: II

T (Extent of Primary Tumor): T2

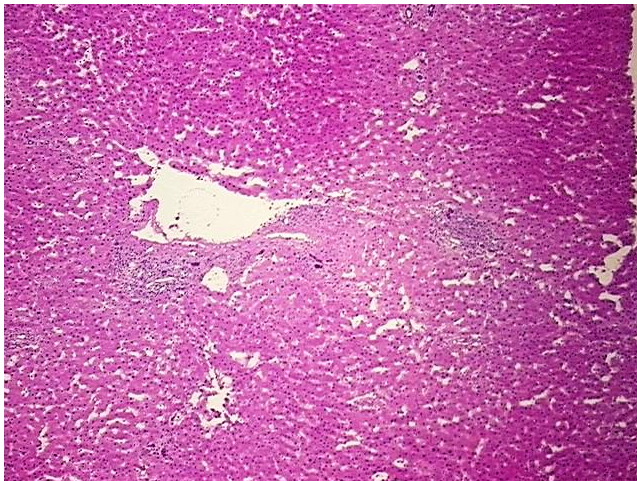
N (Lymph node metastasis): NX

M (Distant metastasis): MX

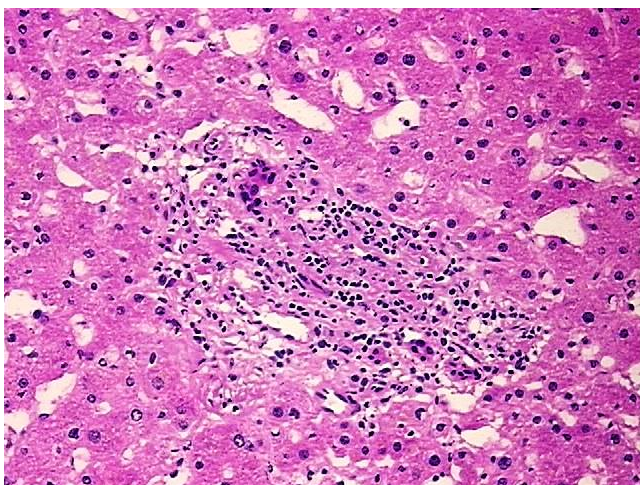
Storage: Store the total DNA -80°C.

Stability: These products are stable for one year from date of shipping when stored at -80°C without repeated freeze/thaws.

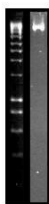
Product images:



DNA - 4x.



DNA - 20x.



DNA PCR Image