

Product datasheet for **CD564146**

Tissue Genomic DNA, Liver

Product data:

Product Type:	Genomic DNA
Disease State:	Cancer
Diagnosis Category:	Liver Cancer
Tissue:	Liver
Frozen Sample ID:	FR5B33EF4D
Case ID:	CI0000009200
Prep:	D
Vial ID:	DN000006C5
Tissue of Origin:	Liver
Site of Finding:	Liver
Appearance:	Tumor
Sample Diagnosis (from Pathology Verification):	Carcinoma of liver, hepatocellular
Normal:	0%
Lesional:	0%
Tumor:	98%
Tumor Hypo/Acellular Stroma:	2%
Tumor Hypercellular Stroma:	0%
Necrosis:	0%
Pathology Verification notes from H&E review:	Tumor: Well differentiated hepatocellular carcinoma with a macro-trabecular pattern
Bioanalyzer Ratio (28S/18S):	1.98


[View online »](#)

CASE Diagnosis (from medical center path report): Carcinoma of liver, hepatocellular

Age: 68

Gender: Male

Race: White or Caucasian

Tumor Grade: Not Reported

Minimum Stage Grouping: II

T (Extent of Primary Tumor): T2

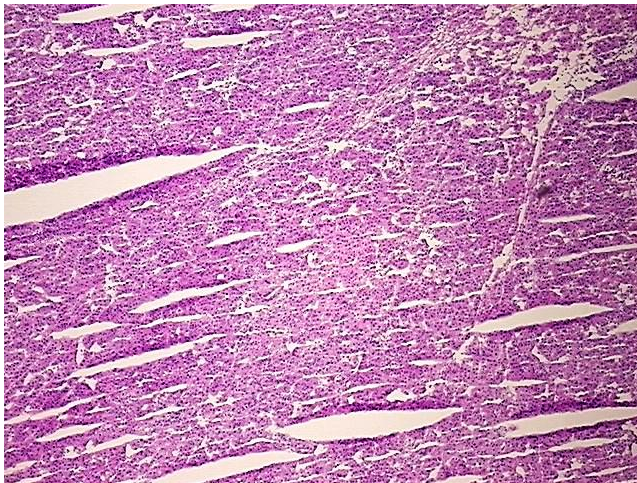
N (Lymph node metastasis): NX

M (Distant metastasis): MX

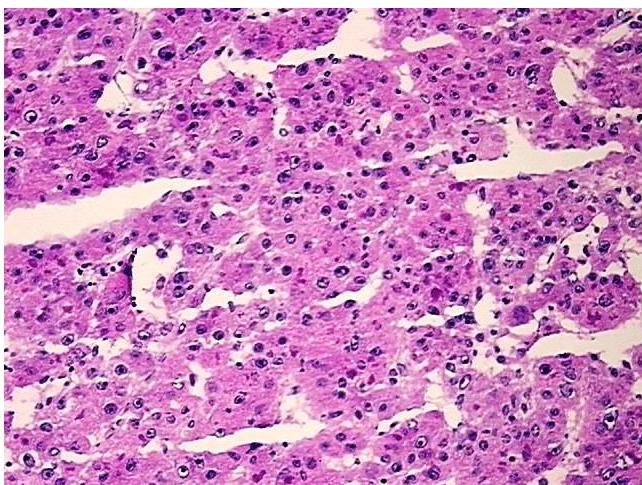
Storage: Store the total DNA -80°C.

Stability: These products are stable for one year from date of shipping when stored at -80°C without repeated freeze/thaws.

Product images:



DNA - 4x.



DNA - 20x.



DNA PCR Image