

Product datasheet for **CD564142**

Tissue Genomic DNA, Colon: sigmoid

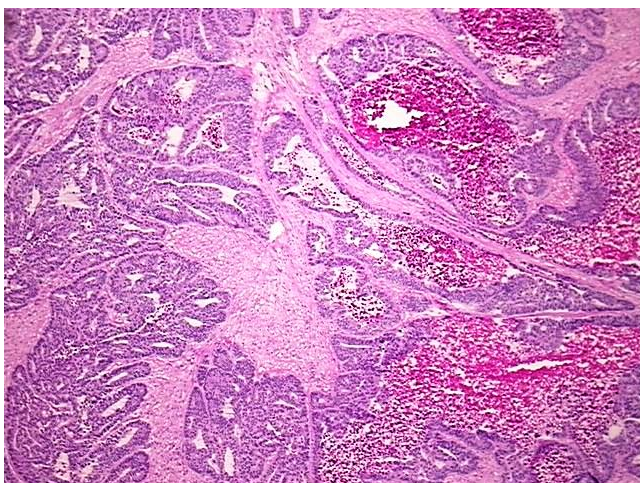
Product data:

Product Type:	Genomic DNA
Disease State:	Cancer
Diagnosis Category:	Colorectal Cancer
Tissue:	Colon
Frozen Sample ID:	FR00029E5A
Case ID:	CI0000009480
Prep:	B
Vial ID:	DN000001DF
Tissue of Origin:	Colon: sigmoid
Site of Finding:	Colon: sigmoid
Appearance:	Tumor
Sample Diagnosis (from Pathology Verification):	Adenocarcinoma of colon
Normal:	0%
Lesional:	0%
Tumor:	60%
Tumor Hypo/Acellular Stroma:	0%
Tumor Hypercellular Stroma:	25%
Necrosis:	15%
Bioanalyzer Ratio (28S/18S):	2.01
CASE Diagnosis (from medical center path report):	Adenocarcinoma of colon
Age:	76

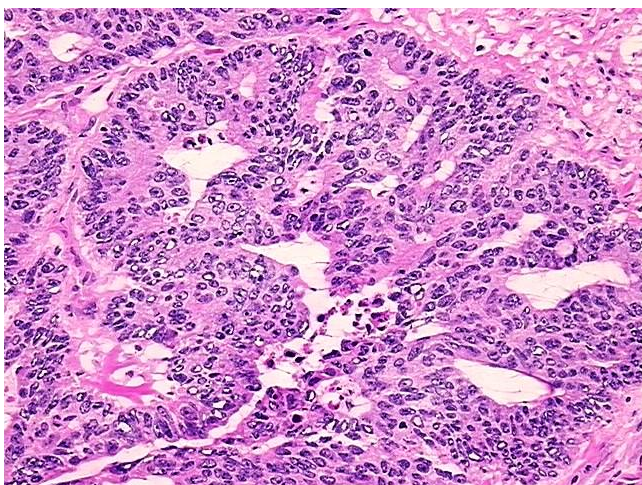


[View online »](#)

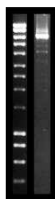
Gender:	Female
Race:	White or Caucasian
Tumor Grade:	AJCC G2: Moderately differentiated
Minimum Stage Grouping:	IIA
T (Extent of Primary Tumor):	T3
N (Lymph node metastasis):	N0
M (Distant metastasis):	MX
Storage:	Store the total DNA -80°C.
Stability:	These products are stable for one year from date of shipping when stored at -80°C without repeated freeze/thaws.

Product images:

DNA - 4x.



DNA - 20x.



DNA PCR Image