

Product datasheet for **CD564126**

Tissue Genomic DNA, Lung

Product data:

Product Type:	Genomic DNA
Disease State:	Cancer
Diagnosis Category:	Lung Cancer
Tissue:	Lung
Frozen Sample ID:	FR0002B916
Case ID:	CI0000009704
Prep:	A
Vial ID:	DN000002A5
Tissue of Origin:	Lung
Site of Finding:	Lung
Appearance:	Tumor
Sample Diagnosis (from Pathology Verification):	Carcinoma of lung, squamous cell
Normal:	0%
Lesional:	0%
Tumor:	75%
Tumor Hypo/Acellular Stroma:	0%
Tumor Hypercellular Stroma:	23%
Necrosis:	2%
Pathology Verification notes from H&E review:	Tumor Stroma (Cellular): Desmoplastic reaction, Fibroblastic cells, Inflammatory cells
Bioanalyzer Ratio (28S/18S):	2



[View online »](#)

CASE Diagnosis (from medical center path report): Carcinoma of lung, squamous cell

Age: 68

Gender: Female

Race: Black or African American

Tumor Grade: AJCC G3: Poorly differentiated

Minimum Stage Grouping: IIA

T (Extent of Primary Tumor): T1

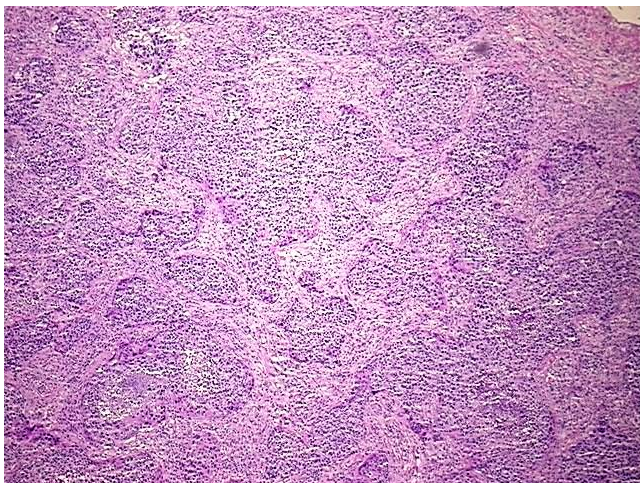
N (Lymph node metastasis): N1

M (Distant metastasis): MX

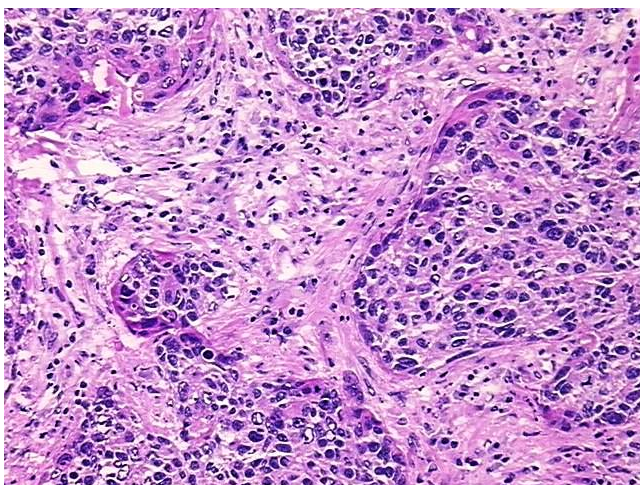
Storage: Store the total DNA -80°C.

Stability: These products are stable for one year from date of shipping when stored at -80°C without repeated freeze/thaws.

Product images:



DNA - 4x.



DNA - 20x.



DNA PCR Image