

## Product datasheet for **CD564050**

### Tissue Genomic DNA, Kidney

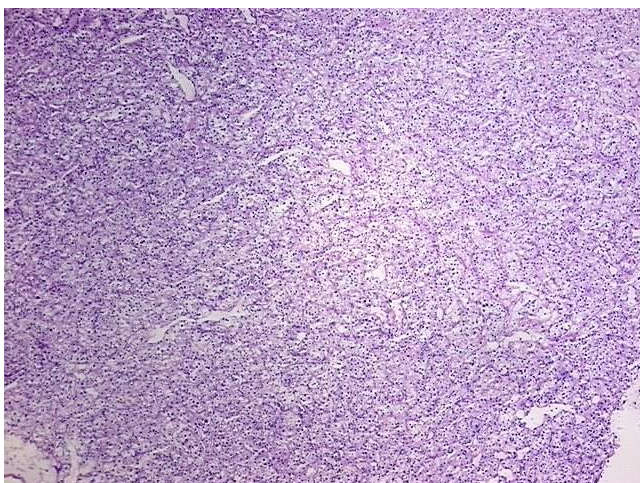
#### Product data:

Product Type:	Genomic DNA
Disease State:	Cancer
Diagnosis Category:	Renal Cell Carcinoma
Tissue:	Kidney
Frozen Sample ID:	FR00026A8E
Case ID:	CI0000008656
Prep:	A
Vial ID:	DN0000033D
Tissue of Origin:	Kidney
Site of Finding:	Kidney
Appearance:	Tumor
Sample Diagnosis (from Pathology Verification):	Carcinoma of kidney, renal cell, clear cell
Normal:	0%
Lesional:	0%
Tumor:	85%
Tumor Hypo/Acellular Stroma:	0%
Tumor Hypercellular Stroma:	10%
Necrosis:	5%
Bioanalyzer Ratio (28S/18S):	1.93
CASE Diagnosis (from medical center path report):	Carcinoma of kidney, renal cell, clear cell
Age:	59

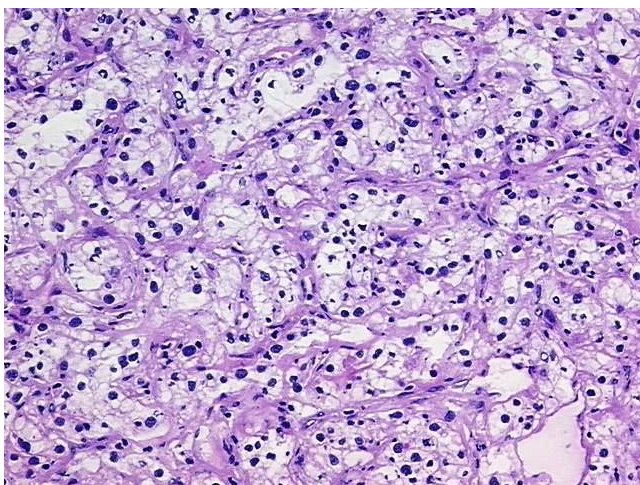


[View online »](#)

Gender:	Male
Race:	Black or African American
Tumor Grade:	Fuhrman G3: Nuclei very irregular
Minimum Stage Grouping:	III
T (Extent of Primary Tumor):	T3a
N (Lymph node metastasis):	NX
M (Distant metastasis):	MX
Storage:	Store the total DNA -80°C.
Stability:	These products are stable for one year from date of shipping when stored at -80°C without repeated freeze/thaws.

**Product images:**

DNA - 4x.



DNA - 20x.



DNA PCR Image