

Product datasheet for **CD564045**

Tissue Genomic DNA, Ovary

Product data:

Product Type:	Genomic DNA
Disease State:	Cancer
Diagnosis Category:	Ovarian Cancer
Tissue:	Ovary
Frozen Sample ID:	FR00026657
Case ID:	CI0000008586
Prep:	C
Vial ID:	DN00001351
Tissue of Origin:	Ovary
Site of Finding:	Omentum
Appearance:	Tumor
Sample Diagnosis (from Pathology Verification):	Adenocarcinoma of ovary, papillary serous, metastatic
Normal:	0%
Lesional:	0%
Tumor:	70%
Tumor Hypo/Acellular Stroma:	15%
Tumor Hypercellular Stroma:	15%
Necrosis:	0%
Pathology Verification notes from H&E review:	Tumor Stroma (Cellular): Desmoplastic reaction. Tumor Stroma (Hypo/Acellular): Fibrosis
Bioanalyzer Ratio (28S/18S):	2.01


[View online »](#)

CASE Diagnosis (from medical center path report): Adenocarcinoma of ovary, papillary serous

Age: 45

Gender: Female

Race: White or Caucasian

Tumor Grade: Not Reported

Minimum Stage Grouping: IIIC

T (Extent of Primary Tumor): T3c

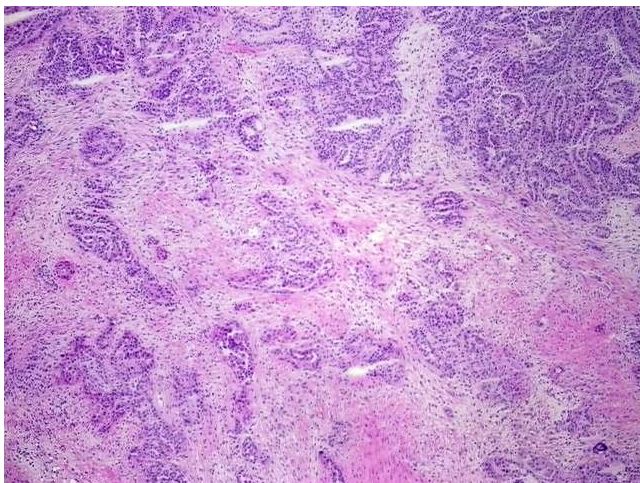
N (Lymph node metastasis): NX

M (Distant metastasis): MX

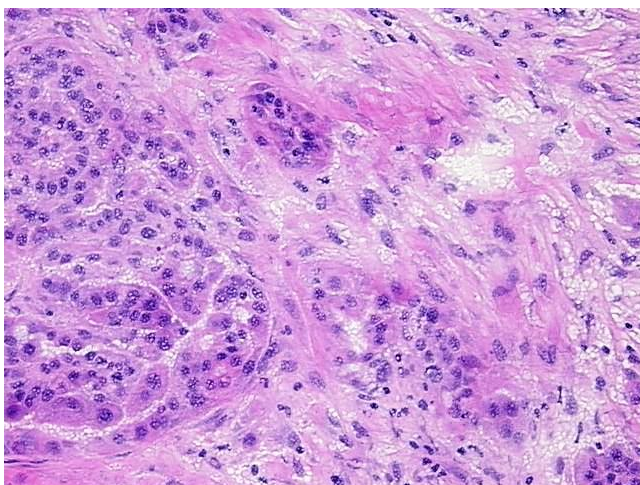
Storage: Store the total DNA -80°C.

Stability: These products are stable for one year from date of shipping when stored at -80°C without repeated freeze/thaws.

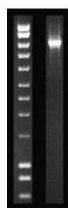
Product images:



DNA - 4x.



DNA - 20x.



DNA PCR Image