

Product datasheet for **CD564034**

Tissue Genomic DNA, Kidney

Product data:

Product Type:	Genomic DNA
Disease State:	Cancer
Diagnosis Category:	Renal Cell Carcinoma
Tissue:	Kidney
Frozen Sample ID:	FR0001812E
Case ID:	CI0000005242
Prep:	C
Vial ID:	DN000005F9
Tissue of Origin:	Kidney
Site of Finding:	Kidney
Appearance:	Tumor
Sample Diagnosis (from Pathology Verification):	Carcinoma of kidney, renal cell, papillary
Normal:	0%
Lesional:	0%
Tumor:	50%
Tumor Hypo/Acellular Stroma:	0%
Tumor Hypercellular Stroma:	50%
Necrosis:	0%
Pathology Verification notes from H&E review:	tumor stroma contains desmoplastic changes with inflammation
Bioanalyzer Ratio (28S/18S):	1.98



[View online »](#)

CASE Diagnosis (from medical center path report): Carcinoma of kidney, renal cell, papillary

Age: 59

Gender: Male

Race: White or Caucasian

Tumor Grade: Fuhrman G3: Nuclei very irregular

Minimum Stage Grouping: II

T (Extent of Primary Tumor): T2

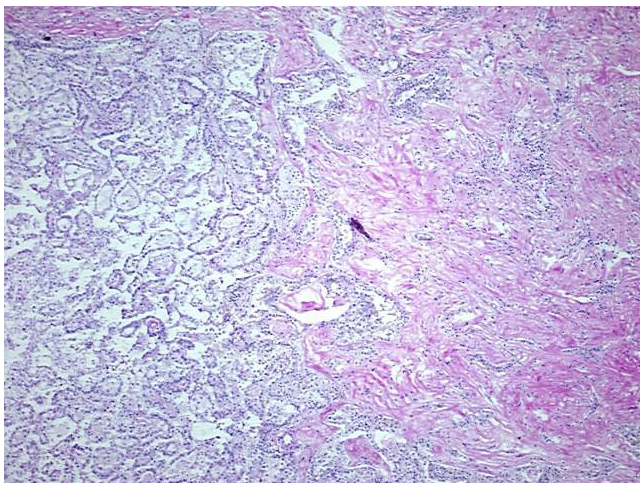
N (Lymph node metastasis): NX

M (Distant metastasis): MX

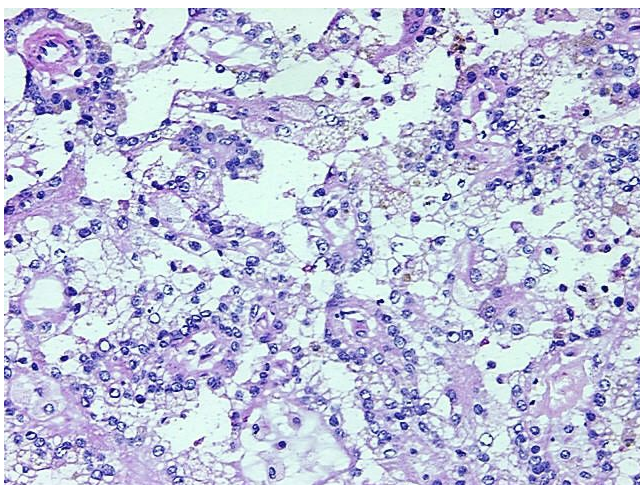
Storage: Store the total DNA -80°C.

Stability: These products are stable for one year from date of shipping when stored at -80°C without repeated freeze/thaws.

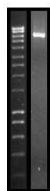
Product images:



DNA - 4x.



DNA - 20x.



DNA PCR Image