

## Product datasheet for **CD564007**

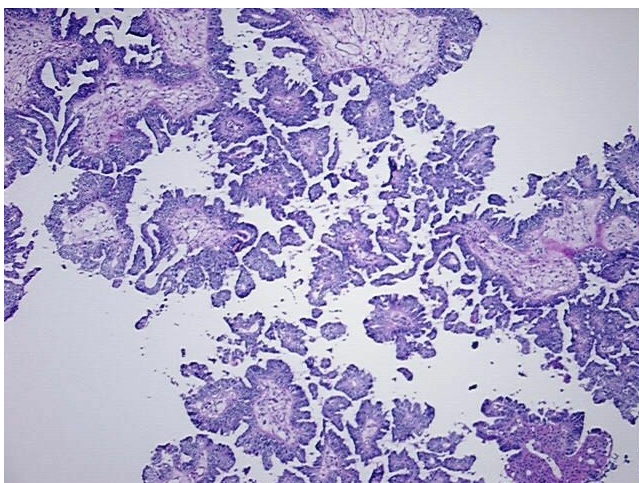
### Tissue Genomic DNA, Ovary: bilateral

#### Product data:

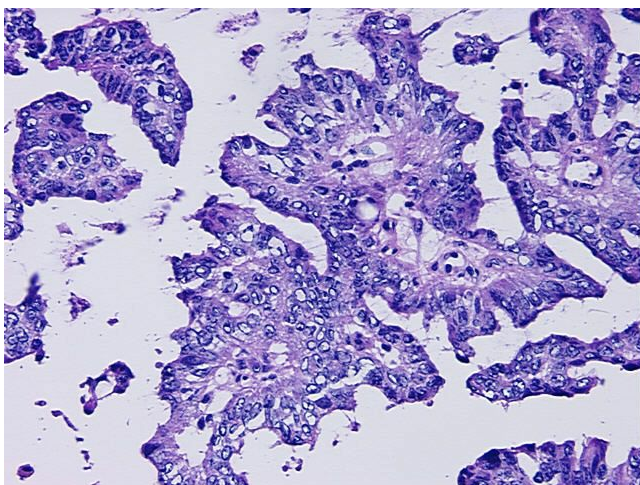
Product Type:	Genomic DNA
Disease State:	Cancer
Diagnosis Category:	Ovarian Cancer
Tissue:	Ovary
Frozen Sample ID:	FR00007E4B
Case ID:	CI0000000476
Prep:	A
Vial ID:	DN0000027F
Tissue of Origin:	Ovary: bilateral
Site of Finding:	Ovary: right
Appearance:	Tumor
Sample Diagnosis (from Pathology Verification):	Adenocarcinoma of ovary, papillary serous
Normal:	0%
Lesional:	0%
Tumor:	90%
Tumor Hypo/Acellular Stroma:	0%
Tumor Hypercellular Stroma:	9%
Necrosis:	1%
Bioanalyzer Ratio (28S/18S):	2.07
CASE Diagnosis (from medical center path report):	Adenocarcinoma of ovary, papillary serous
Age:	41


[View online »](#)

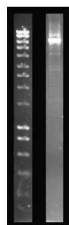
Gender:	Female
Race:	Not reported
Tumor Grade:	FIGO G3: Poorly differentiated
Minimum Stage Grouping:	IIIB
T (Extent of Primary Tumor):	T3b
N (Lymph node metastasis):	N0
M (Distant metastasis):	MX
Storage:	Store the total DNA -80°C.
Stability:	These products are stable for one year from date of shipping when stored at -80°C without repeated freeze/thaws.

**Product images:**


DNA - 4x.



DNA - 20x.



DNA PCR Image