

## Product datasheet for **CD564002**

### Tissue Genomic DNA, Lung

#### Product data:

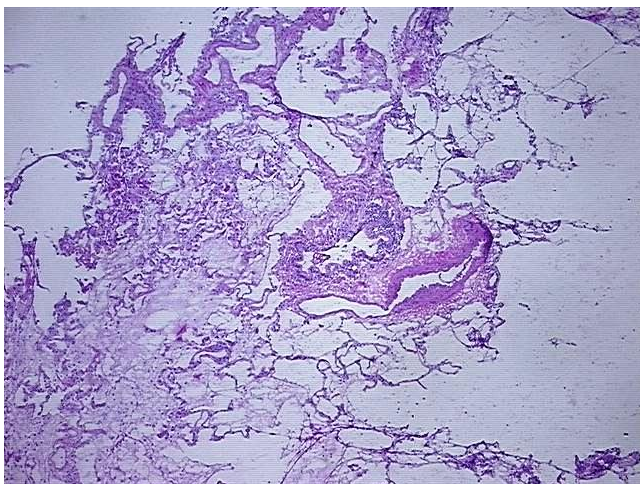
Product Type:	Genomic DNA
Disease State:	Other Disease
Diagnosis Category:	Pneumonia
Tissue:	Lung
Frozen Sample ID:	FR0001721C
Case ID:	CI0000005085
Prep:	C
Vial ID:	DN00000524
Tissue of Origin:	Lung
Site of Finding:	Lung
Appearance:	Lesional
Sample Diagnosis (from Pathology Verification):	Pneumonia, post-obstructive
Normal:	0%
Lesional:	100%
Tumor:	0%
Tumor Hypo/Acellular Stroma:	0%
Tumor Hypercellular Stroma:	0%
Necrosis:	0%
Pathology Verification notes from H&E review:	Non Tumor Structures: 100% No normal architecture
Bioanalyzer Ratio (28S/18S):	2.02



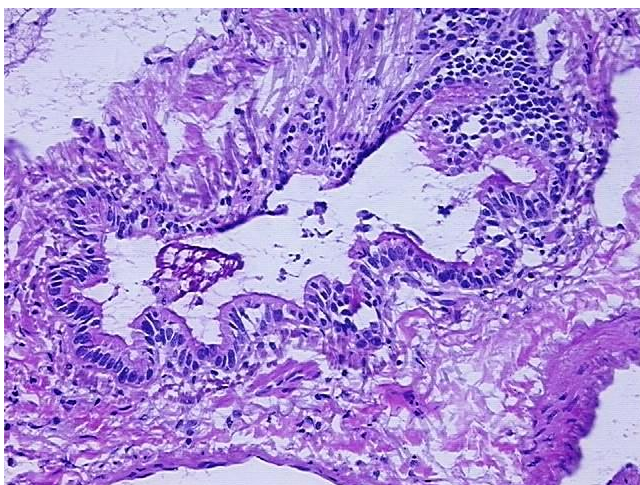
[View online »](#)

<b>CASE Diagnosis (from medical center path report):</b>	Carcinoma of lung, squamous cell
<b>Age:</b>	77
<b>Gender:</b>	Male
<b>Race:</b>	White or Caucasian
<b>Tumor Grade:</b>	Not Reported
<b>Minimum Stage Grouping:</b>	IB
<b>T (Extent of Primary Tumor):</b>	T2
<b>N (Lymph node metastasis):</b>	N0
<b>M (Distant metastasis):</b>	MX
<b>Diagnostic Test Results:</b>	Verhoeff-Van Gieson ~ Elastin stain, Pleura not involved; ERBB1 ~ EGFR ~ Epidermal growth factor receptor ! by IHC, Negative; HER2 ~ ERBB2 ~ Neu ! by IHC, Negative
<b>Storage:</b>	Store the total DNA -80°C.
<b>Stability:</b>	These products are stable for one year from date of shipping when stored at -80°C without repeated freeze/thaws.

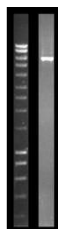
### Product images:



DNA - 4x.



DNA - 20x.



DNA PCR Image