

Product datasheet for **CD563991**

Tissue Genomic DNA, Breast

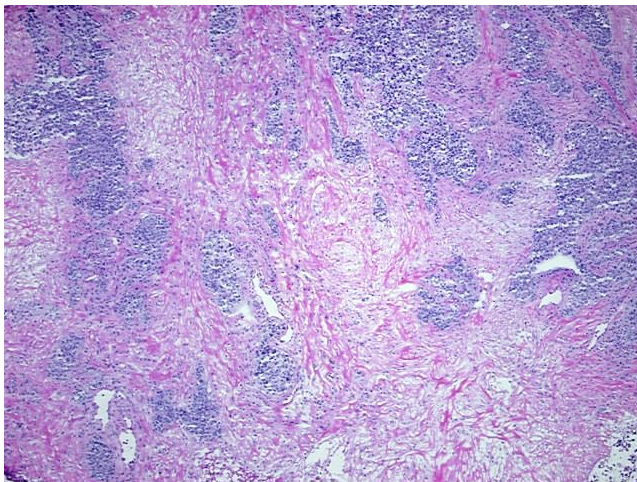
Product data:

| | |
|---|----------------------------------|
| Product Type: | Genomic DNA |
| Disease State: | Cancer |
| Diagnosis Category: | Breast Cancer |
| Tissue: | Breast |
| Frozen Sample ID: | FR0001B627 |
| Case ID: | CI0000005285 |
| Prep: | C |
| Vial ID: | DN0000094E |
| Tissue of Origin: | Breast |
| Site of Finding: | Breast |
| Appearance: | Tumor |
| Sample Diagnosis (from Pathology Verification): | Adenocarcinoma of breast, ductal |
| Normal: | 0% |
| Lesional: | 0% |
| Tumor: | 40% |
| Tumor Hypo/Acellular Stroma: | 40% |
| Tumor Hypercellular Stroma: | 2% |
| Necrosis: | 18% |
| Bioanalyzer Ratio (28S/18S): | 2.1 |
| CASE Diagnosis (from medical center path report): | Adenocarcinoma of breast, ductal |
| Age: | 64 |

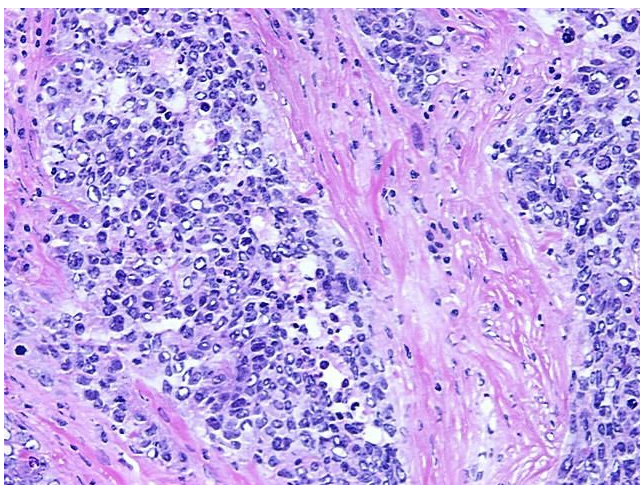

[View online »](#)

| | |
|-------------------------------------|--|
| Gender: | Female |
| Race: | Not reported |
| Tumor Grade: | Nottingham G3: 8-9 points High combined grade (unfavorable) |
| Minimum Stage Grouping: | IIIA |
| T (Extent of Primary Tumor): | T3 |
| N (Lymph node metastasis): | N1biv |
| M (Distant metastasis): | MX |
| Diagnostic Test Results: | Estrogen receptor ~ ER ! by IHC,Negative; HER2 ~ ERBB2 ~ Neu ! by IHC,Negative |
| Storage: | Store the total DNA -80°C. |
| Stability: | These products are stable for one year from date of shipping when stored at -80°C without repeated freeze/thaws. |

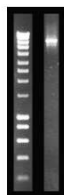
Product images:



DNA - 4x.



DNA - 20x.



DNA PCR Image