

## Product datasheet for **CD563859**

### Tissue Genomic DNA, Kidney

#### Product data:

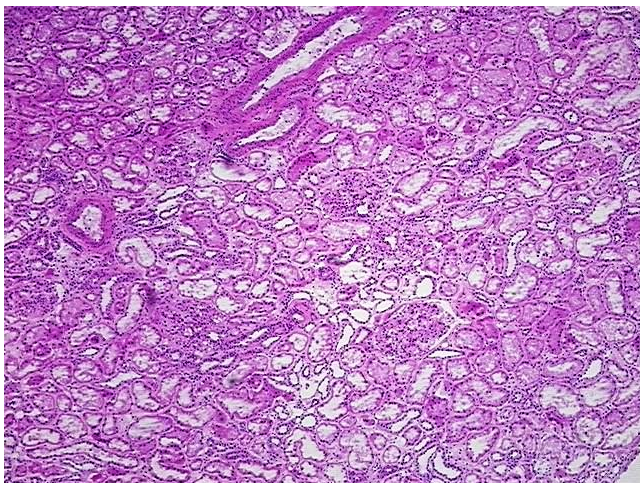
Product Type:	Genomic DNA
Disease State:	Normal
Diagnosis Category:	Normal
Tissue:	Kidney
Frozen Sample ID:	FR5B33AA99
Case ID:	CI0000006958
Prep:	F
Vial ID:	DN00000964
Tissue of Origin:	Kidney
Site of Finding:	Kidney
Appearance:	Normal
Sample Diagnosis (from Pathology Verification):	Within normal limits
Normal:	100%
Lesional:	0%
Tumor:	0%
Tumor Hypo/Acellular Stroma:	0%
Tumor Hypercellular Stroma:	0%
Necrosis:	0%
Pathology Verification notes from H&E review:	100% cortex, 0% medulla
Bioanalyzer Ratio (28S/18S):	1.93



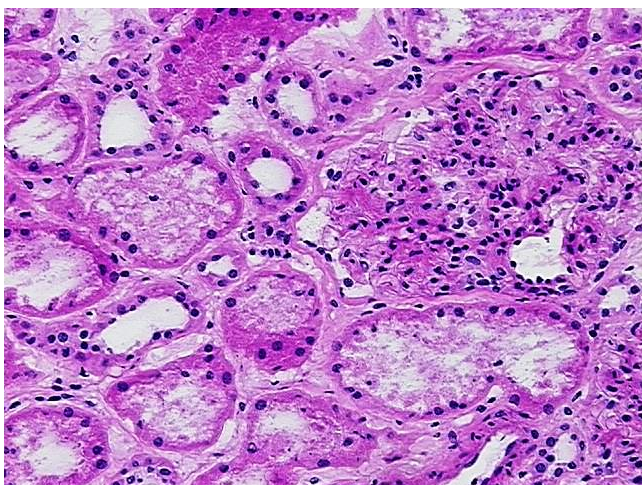
[View online »](#)

<b>CASE Diagnosis (from medical center path report):</b>	Carcinoma of kidney, renal cell, clear cell
<b>Age:</b>	61
<b>Gender:</b>	Male
<b>Race:</b>	White or Caucasian
<b>Tumor Grade:</b>	Not applicable
<b>Minimum Stage Grouping:</b>	Not applicable
<b>T (Extent of Primary Tumor):</b>	Not applicable
<b>N (Lymph node metastasis):</b>	Not applicable
<b>M (Distant metastasis):</b>	Not applicable
<b>Storage:</b>	Store the total DNA -80°C.
<b>Stability:</b>	These products are stable for one year from date of shipping when stored at -80°C without repeated freeze/thaws.

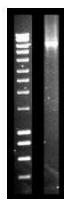
### Product images:



DNA - 4x.



DNA - 20x.



DNA PCR Image