

## Product datasheet for **CD563849**

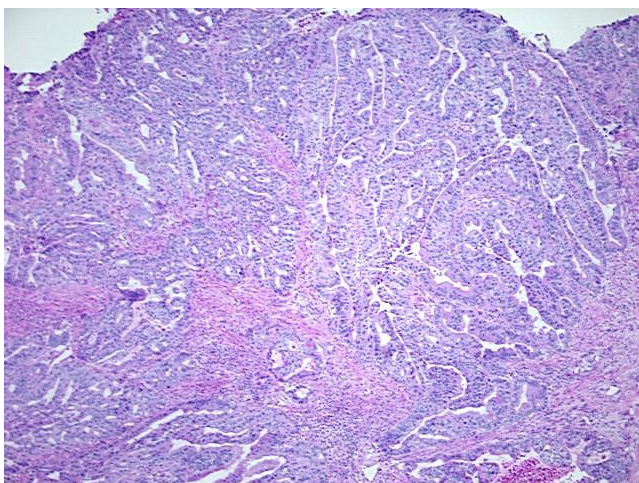
### Tissue Genomic DNA, Gastroesophageal junction

#### Product data:

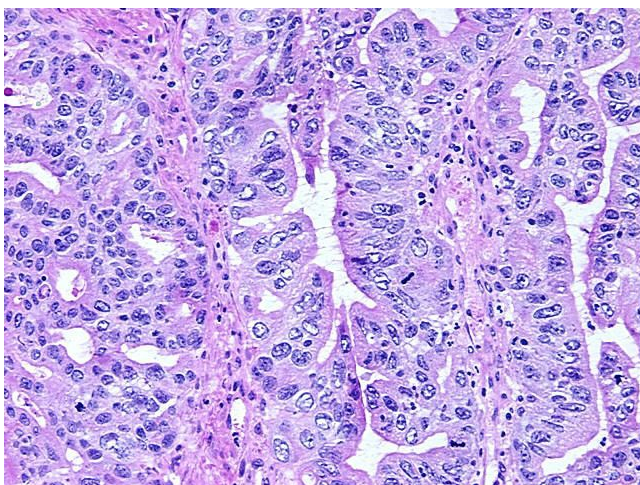
Product Type:	Genomic DNA
Disease State:	Cancer
Diagnosis Category:	Esophageal/Gastroesophageal Cancer
Tissue:	Gastroesophageal junction
Frozen Sample ID:	FR0001D5DA
Case ID:	CI0000006887
Prep:	A
Vial ID:	DN00001657
Tissue of Origin:	Gastroesophageal junction
Site of Finding:	Esophagus
Appearance:	Tumor
Sample Diagnosis (from Pathology Verification):	Adenocarcinoma of gastroesophageal junction
Normal:	0%
Lesional:	0%
Tumor:	70%
Tumor Hypo/Acellular Stroma:	0%
Tumor Hypercellular Stroma:	25%
Necrosis:	5%
Bioanalyzer Ratio (28S/18S):	2.1
CASE Diagnosis (from medical center path report):	Adenocarcinoma of gastroesophageal junction
Age:	82


[View online »](#)

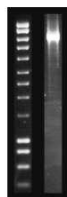
Gender:	Male
Race:	White or Caucasian
Tumor Grade:	AJCC G2: Moderately differentiated
Minimum Stage Grouping:	IIA
T (Extent of Primary Tumor):	T2
N (Lymph node metastasis):	N0
M (Distant metastasis):	MX
Storage:	Store the total DNA -80°C.
Stability:	These products are stable for one year from date of shipping when stored at -80°C without repeated freeze/thaws.

**Product images:**


DNA - 4x.



DNA - 20x.



DNA PCR Image