

## Product datasheet for **CD563845**

### Tissue Genomic DNA, Lymphoid tissue

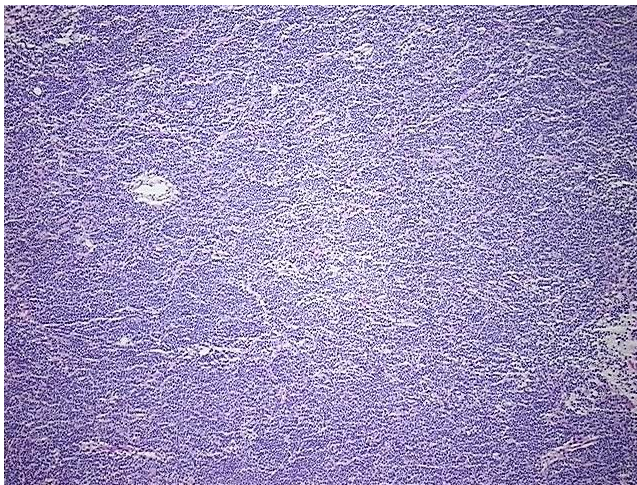
#### Product data:

Product Type:	Genomic DNA
Disease State:	Cancer
Diagnosis Category:	Lymphoma
Tissue:	Lymphoid tissue
Frozen Sample ID:	FR0001D104
Case ID:	CI0000006834
Prep:	A
Vial ID:	DN000013FD
Tissue of Origin:	Lymphoid tissue
Site of Finding:	Mesentery
Appearance:	Tumor
Sample Diagnosis (from Pathology Verification):	Lymphoma, large B-cell, diffuse
Normal:	0%
Lesional:	0%
Tumor:	85%
Tumor Hypo/Acellular Stroma:	0%
Tumor Hypercellular Stroma:	15%
Necrosis:	0%
Bioanalyzer Ratio (28S/18S):	1.99
CASE Diagnosis (from medical center path report):	Lymphoma, large B-cell, diffuse
Age:	54

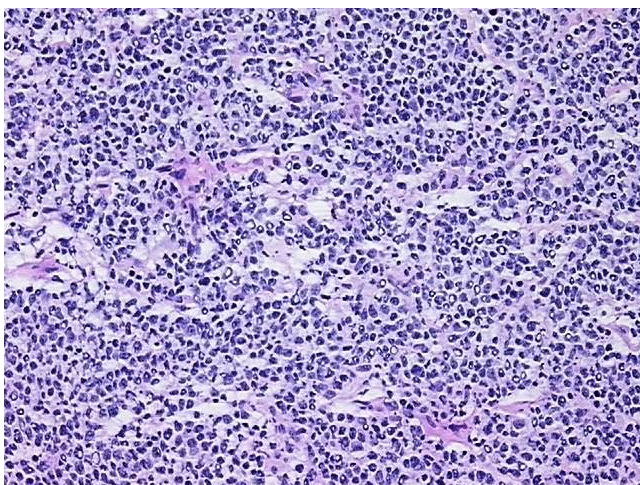

[View online »](#)

<b>Gender:</b>	Male
<b>Race:</b>	White or Caucasian
<b>Tumor Grade:</b>	Not Reported
<b>Minimum Stage Grouping:</b>	IIB
<b>T (Extent of Primary Tumor):</b>	Not applicable
<b>N (Lymph node metastasis):</b>	Not applicable
<b>M (Distant metastasis):</b>	Not applicable
<b>Diagnostic Test Results:</b>	CD3 ~ Leu4 ~ UCHT1 ! by FC,Negative; CD19 ~ B4 ~ Leu12 ! by IHC,Negative; CD22 ~ Leu14 ! by IHC,Positive; Kappa light chain ! by IHC,Positive; BCL2 oncoprotein ! by IHC,Positive; CD5 ~ Leu1 ! by IHC,Negative; CD10 ~ CALLA ~ Common ALL anti
<b>Storage:</b>	Store the total DNA -80°C.
<b>Stability:</b>	These products are stable for one year from date of shipping when stored at -80°C without repeated freeze/thaws.

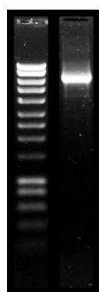
### Product images:



DNA - 4x.



DNA - 20x.



DNA PCR Image