

## Product datasheet for **CD563830**

### Tissue Genomic DNA, Ovary: left

#### Product data:

Product Type:	Genomic DNA
Disease State:	Cancer
Diagnosis Category:	Ovarian Cancer
Tissue:	Ovary
Frozen Sample ID:	FR0001D05D
Case ID:	CI0000005625
Prep:	A
Vial ID:	DN00001696
Tissue of Origin:	Ovary: left
Site of Finding:	Ovary: left
Appearance:	Tumor
Sample Diagnosis (from Pathology Verification):	Adenocarcinoma of ovary, endometrioid
Normal:	0%
Lesional:	0%
Tumor:	80%
Tumor Hypo/Acellular Stroma:	15%
Tumor Hypercellular Stroma:	0%
Necrosis:	5%
Pathology Verification notes from H&E review:	Tumor: arising in a mucinous adenocarcinoma
Bioanalyzer Ratio (28S/18S):	2.01


[View online »](#)

**CASE Diagnosis (from medical center path report):** Adenocarcinoma of ovary, endometrioid

**Age:** 58

**Gender:** Female

**Race:** Asian

**Tumor Grade:** FIGO G1: Well differentiated

**Minimum Stage Grouping:** IB

**T (Extent of Primary Tumor):** T1b

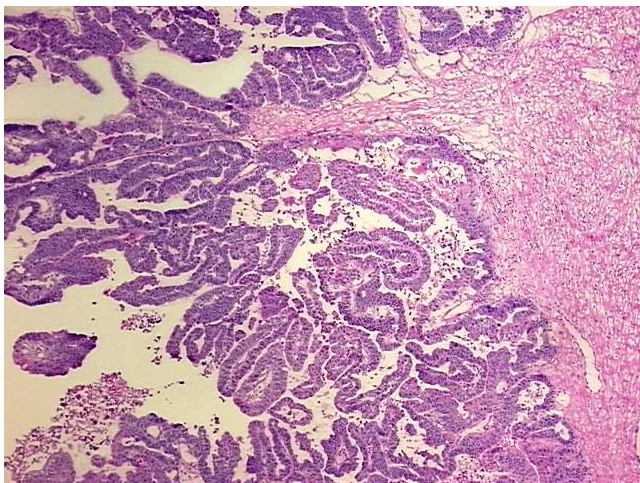
**N (Lymph node metastasis):** N0

**M (Distant metastasis):** MX

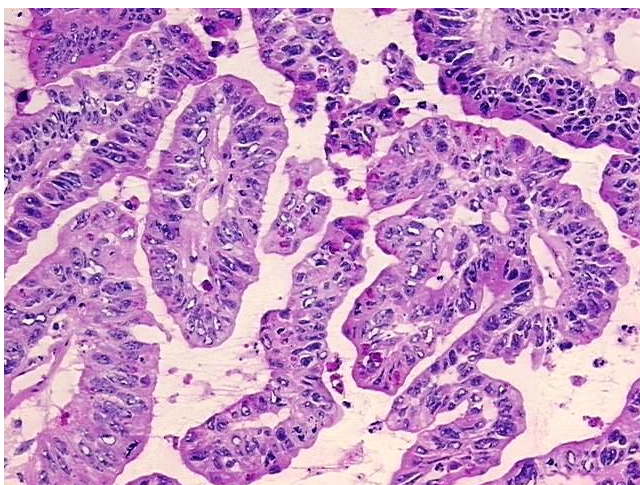
**Storage:** Store the total DNA -80°C.

**Stability:** These products are stable for one year from date of shipping when stored at -80°C without repeated freeze/thaws.

## Product images:



DNA - 4x.



DNA - 20x.



DNA PCR Image