

## Product datasheet for **CD563829**

### Tissue Genomic DNA, Lung

#### Product data:

Product Type:	Genomic DNA
Disease State:	Cancer
Diagnosis Category:	Lung Cancer
Tissue:	Lung
Frozen Sample ID:	FR0001A0D3
Case ID:	CI0000005659
Prep:	A
Vial ID:	DN00000309
Tissue of Origin:	Lung
Site of Finding:	Lung
Appearance:	Tumor
Sample Diagnosis (from Pathology Verification):	Carcinoma of lung, squamous cell
Normal:	0%
Lesional:	0%
Tumor:	60%
Tumor Hypo/Acellular Stroma:	0%
Tumor Hypercellular Stroma:	30%
Necrosis:	10%
Pathology Verification notes from H&E review:	Tumor: Moderate to poorly differentiated
Bioanalyzer Ratio (28S/18S):	1.89



[View online »](#)

CASE Diagnosis (from medical center path report): Carcinoma of lung, squamous cell

Age: 67

Gender: Male

Race: White or Caucasian

Tumor Grade: Not Reported

Minimum Stage Grouping: IIIA

T (Extent of Primary Tumor): T3

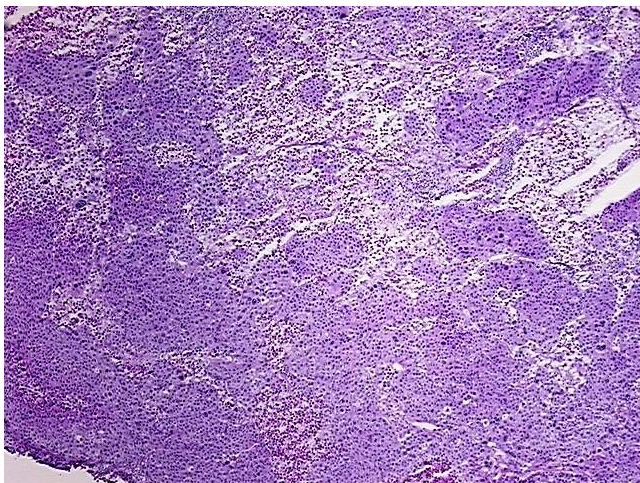
N (Lymph node metastasis): N2

M (Distant metastasis): MX

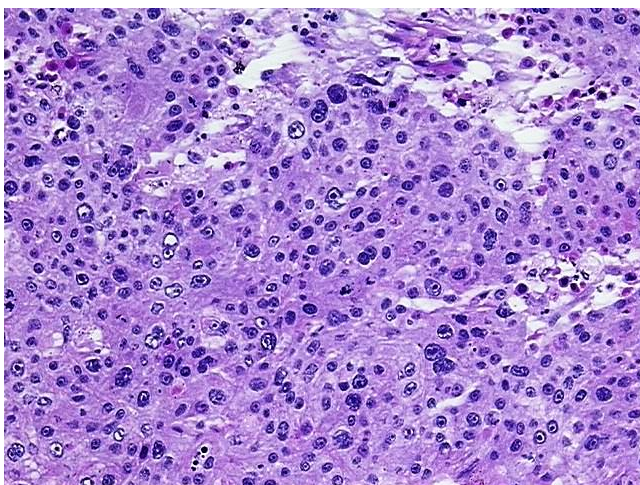
Storage: Store the total DNA -80°C.

Stability: These products are stable for one year from date of shipping when stored at -80°C without repeated freeze/thaws.

### Product images:



DNA - 4x.



DNA - 20x.



DNA PCR Image