

## Product datasheet for **CD563775**

### Tissue Genomic DNA, Ovary: right

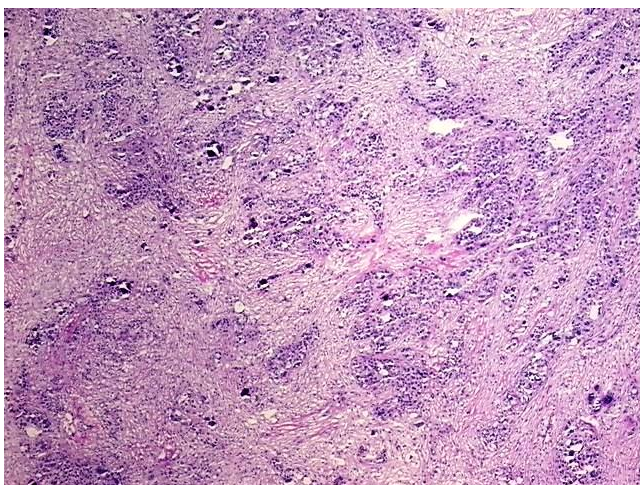
#### Product data:

|   |   |
|---|---|
| Product Type:                                   | Genomic DNA   |
| Disease State:                                  | Cancer  |
| Diagnosis Category:                             | Ovarian Cancer  |
| Tissue:   | Ovary   |
| Frozen Sample ID:                               | FR0001C334  |
| Case ID:  | CI0000006074  |
| Prep:   | A   |
| Vial ID:  | DN000006F8  |
| Tissue of Origin:                               | Ovary: right  |
| Site of Finding:                                | Mesentery   |
| Appearance:                                     | Tumor   |
| Sample Diagnosis (from Pathology Verification): | Adenocarcinoma of ovary, metastatic                                     |
| Normal:   | 0%  |
| Lesional:                                       | 0%  |
| Tumor:  | 50%   |
| Tumor Hypo/Acellular Stroma:                    | 5%  |
| Tumor Hypercellular Stroma:                     | 20%   |
| Necrosis:                                       | 25%   |
| Pathology Verification notes from H&E review:   | tumor stroma: desmoplasia, numerous psammomatous calcifications present |
| Bioanalyzer Ratio (28S/18S):                    | 1.89  |

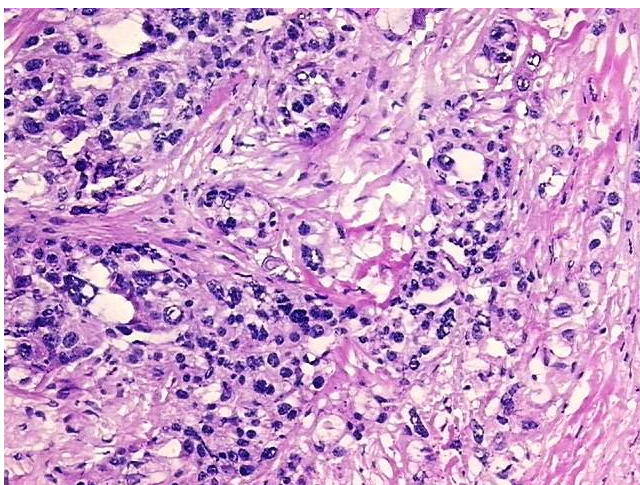

[View online »](#)

|  |  |
|--|--|
| <b>CASE Diagnosis (from medical center path report):</b> | Adenocarcinoma of ovary  |
| <b>Age:</b>  | 66   |
| <b>Gender:</b>   | Female   |
| <b>Race:</b>   | White or Caucasian   |
| <b>Tumor Grade:</b>                                      | FIGO G3: Poorly differentiated   |
| <b>Minimum Stage Grouping:</b>                           | IIIB   |
| <b>T (Extent of Primary Tumor):</b>                      | T3b  |
| <b>N (Lymph node metastasis):</b>                        | NX   |
| <b>M (Distant metastasis):</b>                           | MX   |
| <b>Diagnostic Test Results:</b>                          | Prolactin-induced protein ~ PIP ~ GCDFP15 ! by IHC,Negative  |
| <b>Storage:</b>  | Store the total DNA -80°C.   |
| <b>Stability:</b>  | These products are stable for one year from date of shipping when stored at -80°C without repeated freeze/thaws. |

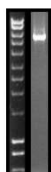
### Product images:



DNA - 4x.



DNA - 20x.



DNA PCR Image