

Product datasheet for **CD563616**

Tissue Genomic DNA, Esophagus

Product data:

| | |
|---|--|
| Product Type: | Genomic DNA |
| Disease State: | Cancer |
| Diagnosis Category: | Esophageal/Gastroesophageal Cancer |
| Tissue: | Esophagus |
| Frozen Sample ID: | FR5B341B6B |
| Case ID: | CI0000013454 |
| Prep: | A |
| Vial ID: | DN00001645 |
| Tissue of Origin: | Esophagus |
| Site of Finding: | Esophagus |
| Appearance: | Tumor |
| Sample Diagnosis (from Pathology Verification): | Adenocarcinoma of esophagus |
| Normal: | 0% |
| Lesional: | 0% |
| Tumor: | 75% |
| Tumor Hypo/Acellular Stroma: | 0% |
| Tumor Hypercellular Stroma: | 15% |
| Necrosis: | 10% |
| Pathology Verification notes from H&E review: | Inflammation: Mild Mixed inflammatory infiltrate |
| Bioanalyzer Ratio (28S/18S): | 2.04 |


[View online »](#)

CASE Diagnosis (from medical center path report): Adenocarcinoma of esophagus

Age: 60

Gender: Male

Race: White or Caucasian

Tumor Grade: Not Reported

Minimum Stage Grouping: I

T (Extent of Primary Tumor): T1

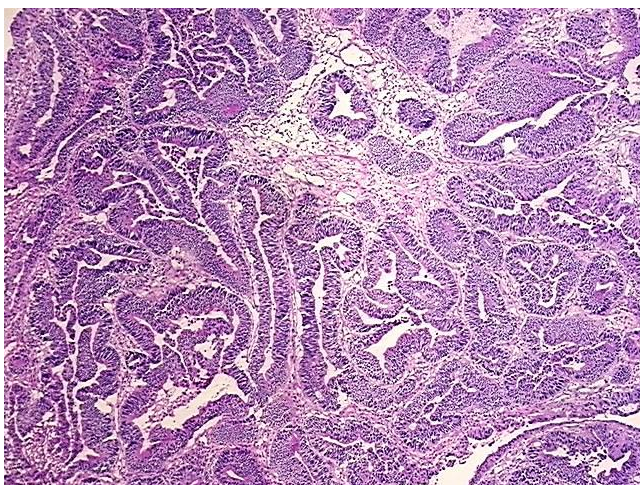
N (Lymph node metastasis): N0

M (Distant metastasis): MX

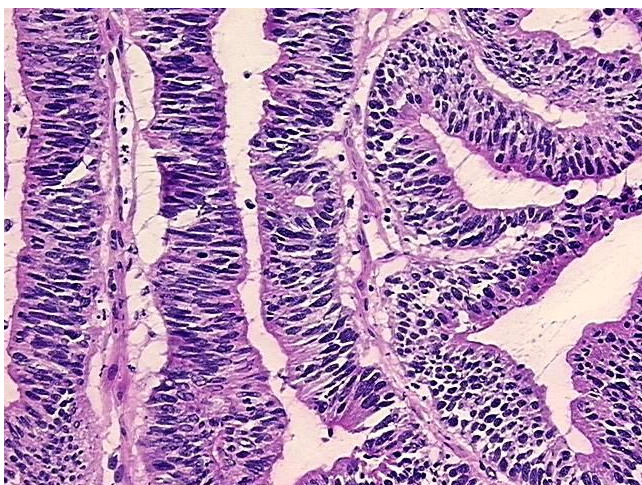
Storage: Store the total DNA -80°C.

Stability: These products are stable for one year from date of shipping when stored at -80°C without repeated freeze/thaws.

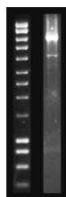
Product images:



DNA - 4x.



DNA - 20x.



DNA PCR Image