

Product datasheet for **CD563577**

Tissue Genomic DNA, Lung

Product data:

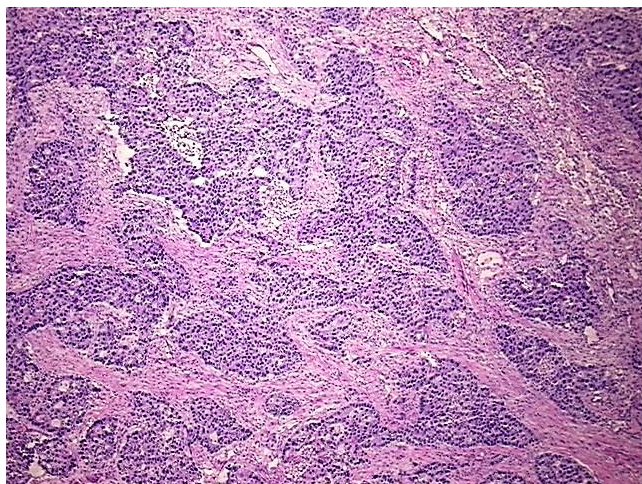
| | |
|---|------------------------|
| Product Type: | Genomic DNA |
| Disease State: | Cancer |
| Diagnosis Category: | Lung Cancer |
| Tissue: | Lung |
| Frozen Sample ID: | FR0002F798 |
| Case ID: | CI0000013164 |
| Prep: | A |
| Vial ID: | DN00000540 |
| Tissue of Origin: | Lung |
| Site of Finding: | Lung |
| Appearance: | Tumor |
| Sample Diagnosis (from Pathology Verification): | Adenocarcinoma of lung |
| Normal: | 10% |
| Lesional: | 0% |
| Tumor: | 50% |
| Tumor Hypo/Acellular Stroma: | 0% |
| Tumor Hypercellular Stroma: | 30% |
| Necrosis: | 10% |
| Pathology Verification notes from H&E review: | Tumor: solid type |
| Bioanalyzer Ratio (28S/18S): | 2 |



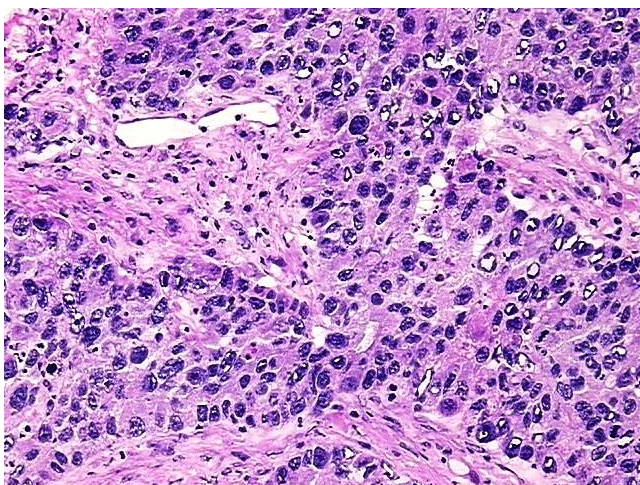
[View online »](#)

| | |
|---|--|
| CASE Diagnosis (from medical center path report): | Adenocarcinoma of lung |
| Age: | 64 |
| Gender: | Male |
| Race: | White or Caucasian |
| Tumor Grade: | AJCC G3: Poorly differentiated |
| Minimum Stage Grouping: | IB |
| T (Extent of Primary Tumor): | T2 |
| N (Lymph node metastasis): | N0 |
| M (Distant metastasis): | MX |
| Diagnostic Test Results: | Proliferation index ~ PI,High; ERBB1 ~ EGFR ~ Epidermal growth factor receptor ! by IHC,Positive, strong; DNA ploidy ~ Cell ploidy,Aneuploid: DI not 0.5 or 1.0 or 2.0 |
| Storage: | Store the total DNA -80°C. |
| Stability: | These products are stable for one year from date of shipping when stored at -80°C without repeated freeze/thaws. |

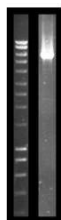
Product images:



DNA - 4x.



DNA - 20x.



DNA PCR Image