

Product datasheet for **CD563485**

Tissue Genomic DNA, Kidney

Product data:

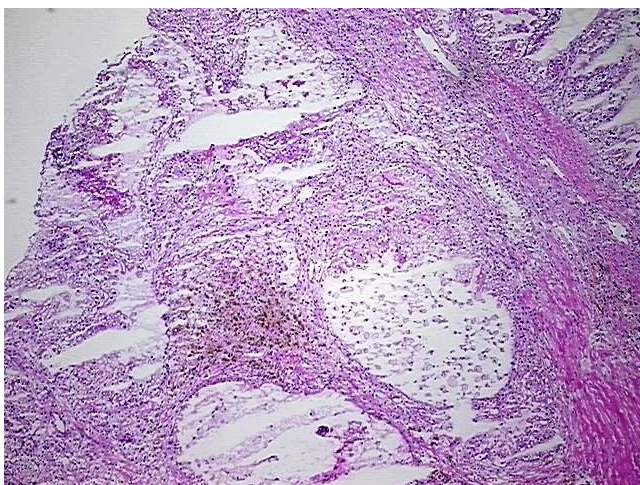
Product Type:	Genomic DNA
Disease State:	Cancer
Diagnosis Category:	Renal Cell Carcinoma
Tissue:	Kidney
Frozen Sample ID:	FR5B33B86C
Case ID:	CI0000009875
Prep:	A
Vial ID:	DN000004BE
Tissue of Origin:	Kidney
Site of Finding:	Adrenal gland
Appearance:	Tumor
Sample Diagnosis (from Pathology Verification):	Carcinoma of kidney, renal cell, clear cell, metastatic
Normal:	5%
Lesional:	0%
Tumor:	75%
Tumor Hypo/Acellular Stroma:	10%
Tumor Hypercellular Stroma:	10%
Necrosis:	0%
Pathology Verification notes from H&E review:	acellular stroma: edematous fluid
Bioanalyzer Ratio (28S/18S):	1.99



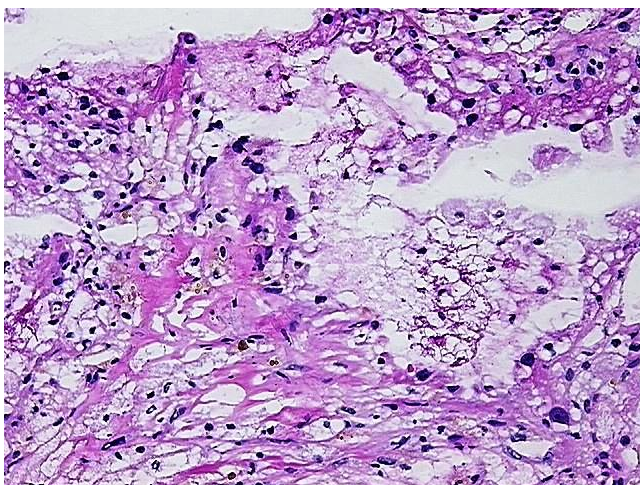
[View online »](#)

CASE Diagnosis (from medical center path report):	Carcinoma of kidney, renal cell, clear cell
Age:	49
Gender:	Male
Race:	White or Caucasian
Tumor Grade:	Fuhrman G3: Nuclei very irregular
Minimum Stage Grouping:	IV
T (Extent of Primary Tumor):	T3a
N (Lymph node metastasis):	N1
M (Distant metastasis):	M1
Diagnostic Test Results:	Cytokeratin (Pan) ~ Keratin, Pan ! by IHC,Negative
Storage:	Store the total DNA -80°C.
Stability:	These products are stable for one year from date of shipping when stored at -80°C without repeated freeze/thaws.

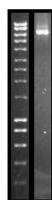
Product images:



DNA - 4x.



DNA - 20x.



DNA PCR Image