

Product datasheet for **CD563465**

Tissue Genomic DNA, Lung

Product data:

Product Type:	Genomic DNA
Disease State:	Other Disease
Diagnosis Category:	Chronic Obstructive Pulmonary Disease (COPD)
Tissue:	Lung
Frozen Sample ID:	FR00029570
Case ID:	CI0000010069
Prep:	C
Vial ID:	DN00000522
Tissue of Origin:	Lung
Site of Finding:	Lung
Appearance:	Lesional
Sample Diagnosis (from Pathology Verification):	Emphysema, centrilobular
Normal:	0%
Lesional:	100%
Tumor:	0%
Tumor Hypo/Acellular Stroma:	0%
Tumor Hypercellular Stroma:	0%
Necrosis:	0%
Pathology Verification notes from H&E review:	Non Tumor Structures: 100% No normal architecture
Bioanalyzer Ratio (28S/18S):	1.97


[View online »](#)

CASE Diagnosis (from medical center path report): Carcinoma of lung, squamous cell

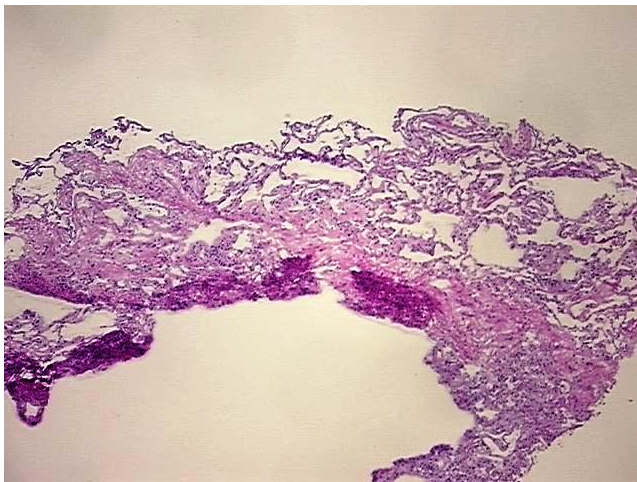
Age: 80
Gender: Female
Race: White or Caucasian
Tumor Grade: AJCC G2: Moderately differentiated
Minimum Stage Grouping: IB
T (Extent of Primary Tumor): T2
N (Lymph node metastasis): N0
M (Distant metastasis): MX

Diagnostic Test Results: Cytokeratins (5 and 6) ~ CK5,6 ! by IHC,Reported as Performed or Reviewed; Neuron specific enolase ~ NSE ! by IHC,Reported as Performed or Reviewed; Synaptophysin ~ SYN ! by IHC,Reported as Performed or Reviewed; Cytokeratin 7 ~ CK7 ! by IHC,Repor

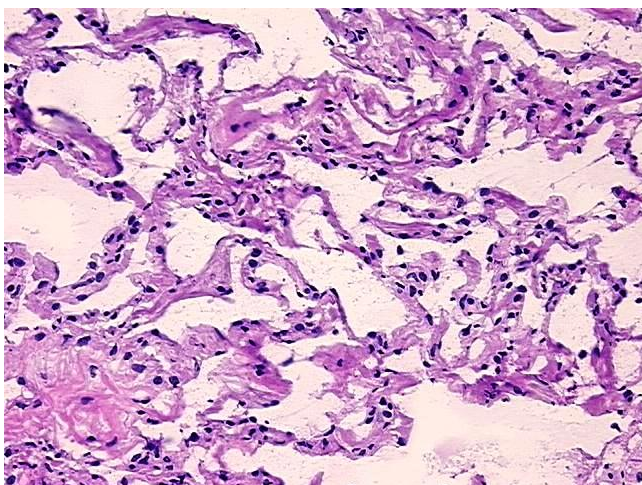
Storage: Store the total DNA -80°C.

Stability: These products are stable for one year from date of shipping when stored at -80°C without repeated freeze/thaws.

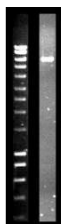
Product images:



DNA - 4x.



DNA - 20x.



DNA PCR Image