

Product datasheet for CD563462

Tissue Genomic DNA, Lung

Product data:

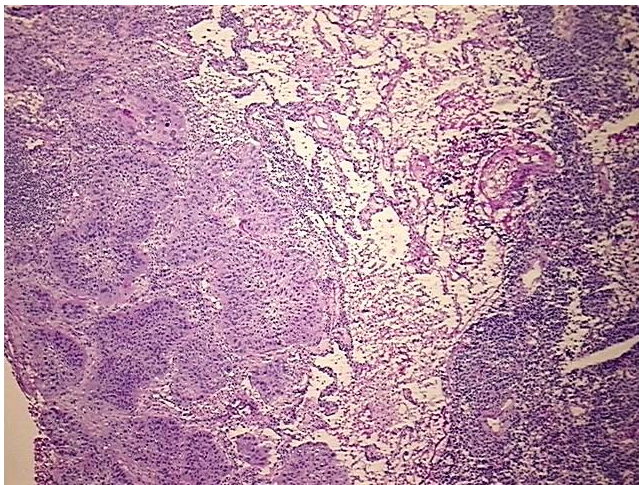
Product Type:	Genomic DNA
Disease State:	Cancer
Diagnosis Category:	Lung Cancer
Tissue:	Lung
Frozen Sample ID:	FR5B33B620
Case ID:	CI0000010069
Prep:	A
Vial ID:	DN000002C5
Tissue of Origin:	Lung
Site of Finding:	Lung
Appearance:	Tumor
Sample Diagnosis (from Pathology Verification):	Carcinoma of lung, squamous cell
Normal:	10%
Lesional:	0%
Tumor:	70%
Tumor Hypo/Acellular Stroma:	0%
Tumor Hypercellular Stroma:	10%
Necrosis:	10%
Bioanalyzer Ratio (28S/18S):	1.97
CASE Diagnosis (from medical center path report):	Carcinoma of lung, squamous cell
Age:	80



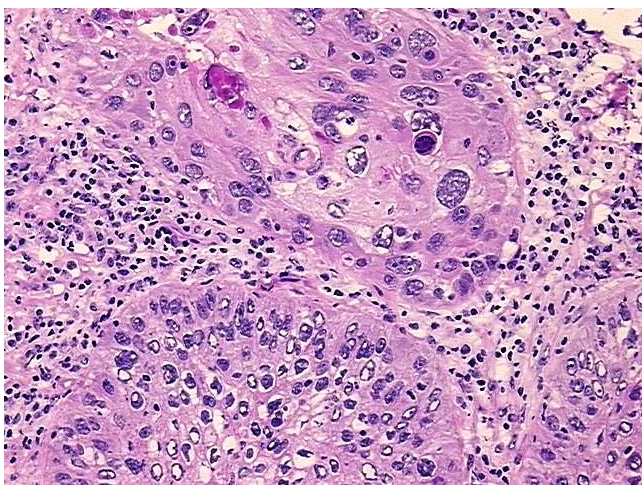
[View online »](#)

Gender:	Female
Race:	White or Caucasian
Tumor Grade:	AJCC G2: Moderately differentiated
Minimum Stage Grouping:	IB
T (Extent of Primary Tumor):	T2
N (Lymph node metastasis):	N0
M (Distant metastasis):	MX
Diagnostic Test Results:	Cytokeratins (5 and 6) ~ CK5,6 ! by IHC,Reported as Performed or Reviewed; Neuron specific enolase ~ NSE ! by IHC,Reported as Performed or Reviewed; Synaptophysin ~ SYN ! by IHC,Reported as Performed or Reviewed; Cytokeratin 7 ~ CK7 ! by IHC,Repor
Storage:	Store the total DNA -80°C.
Stability:	These products are stable for one year from date of shipping when stored at -80°C without repeated freeze/thaws.

Product images:



DNA - 4x.



DNA - 20x.



DNA PCR Image