

Product datasheet for **CD563460**

Tissue Genomic DNA, Ovary: right

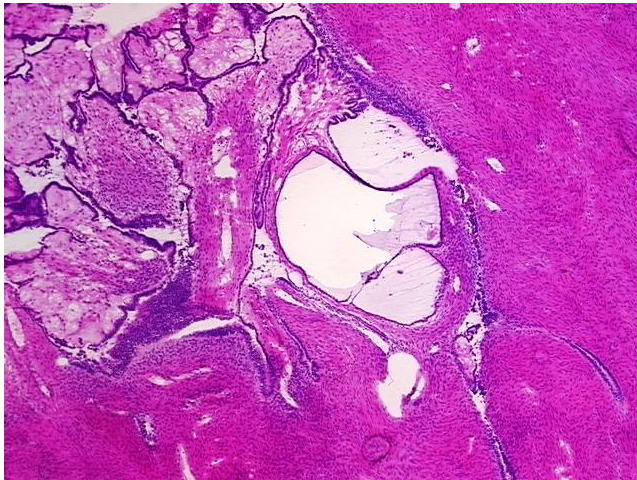
Product data:

| | |
|---|--|
| Product Type: | Genomic DNA |
| Disease State: | Other Disease |
| Diagnosis Category: | Borderline Ovarian Tumor |
| Tissue: | Ovary |
| Frozen Sample ID: | FR000294CE |
| Case ID: | CI0000010068 |
| Prep: | A |
| Vial ID: | DN000000029 |
| Tissue of Origin: | Ovary: right |
| Site of Finding: | Ovary: right |
| Appearance: | Tumor |
| Sample Diagnosis (from Pathology Verification): | Tumor of ovary, serous, borderline |
| Normal: | 0% |
| Lesional: | 0% |
| Tumor: | 60% |
| Tumor Hypo/Acellular Stroma: | 0% |
| Tumor Hypercellular Stroma: | 40% |
| Necrosis: | 0% |
| Pathology Verification notes from H&E review: | Tumor Stroma (Cellular): Desmoplastic reaction |
| Bioanalyzer Ratio (28S/18S): | 2 |

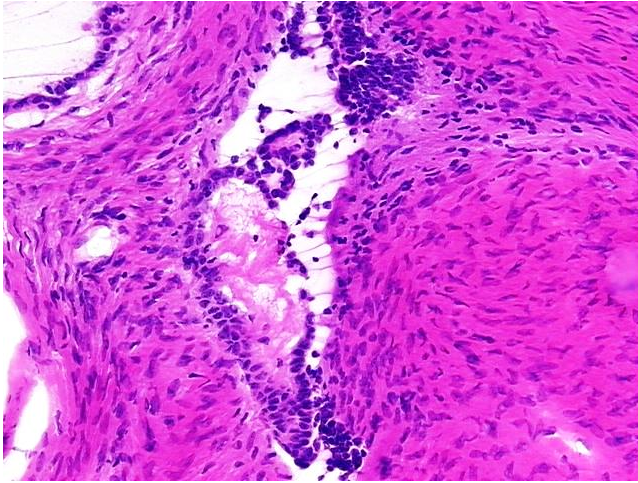

[View online »](#)

| | |
|--|--|
| CASE Diagnosis (from medical center path report): | Tumor of ovary, serous, borderline |
| Age: | 44 |
| Gender: | Female |
| Race: | Black or African American |
| Tumor Grade: | AJCC GB: Borderline malignancy |
| Minimum Stage Grouping: | IIIB |
| T (Extent of Primary Tumor): | T3b |
| N (Lymph node metastasis): | N0 |
| M (Distant metastasis): | MX |
| Diagnostic Test Results: | Epithelial specific antigen ~ BerEP4 ~ MOC31 ! by IHC,Positive; CA125 ~ Ovarian Cancer Antigen,Positive; Calretinin,Positive |
| Storage: | Store the total DNA -80°C. |
| Stability: | These products are stable for one year from date of shipping when stored at -80°C without repeated freeze/thaws. |

Product images:



DNA - 4x.



DNA - 20x.



DNA PCR Image