

Product datasheet for **CD563425**

Tissue Genomic DNA, Ovary: left

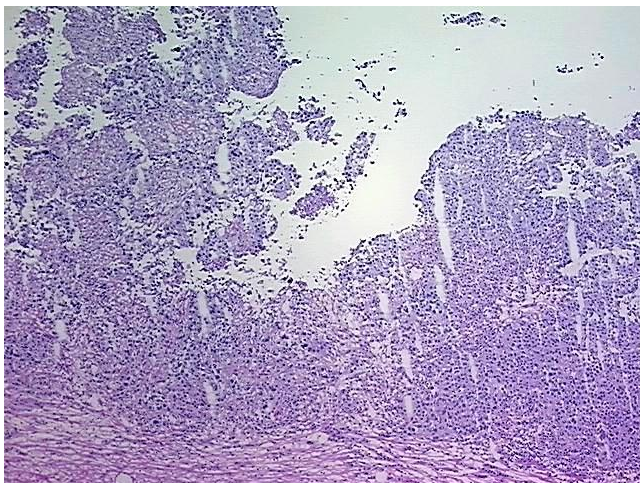
Product data:

Product Type:	Genomic DNA
Disease State:	Cancer
Diagnosis Category:	Ovarian Cancer
Tissue:	Ovary
Frozen Sample ID:	FR00036B8C
Case ID:	CI0000015219
Prep:	A
Vial ID:	DN0000061F
Tissue of Origin:	Ovary: left
Site of Finding:	Ovary: left
Appearance:	Tumor
Sample Diagnosis (from Pathology Verification):	Adenocarcinoma of ovary, serous
Normal:	35%
Lesional:	0%
Tumor:	50%
Tumor Hypo/Acellular Stroma:	0%
Tumor Hypercellular Stroma:	15%
Necrosis:	0%
Pathology Verification notes from H&E review:	Tumor Stroma (Cellular): Desmoplastic reaction. Inflammation: Mild Lymphoplasmacytic infiltrate
Bioanalyzer Ratio (28S/18S):	2.01

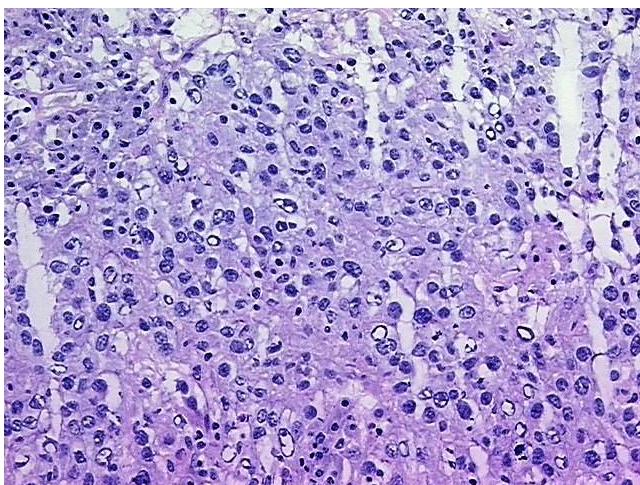
[View online »](#)

CASE Diagnosis (from medical center path report):	Adenocarcinoma of ovary, serous
Age:	49
Gender:	Female
Race:	White or Caucasian
Tumor Grade:	FIGO G3: Poorly differentiated
Minimum Stage Grouping:	IC
T (Extent of Primary Tumor):	T1c
N (Lymph node metastasis):	N0
M (Distant metastasis):	MX
Storage:	Store the total DNA -80°C.
Stability:	These products are stable for one year from date of shipping when stored at -80°C without repeated freeze/thaws.

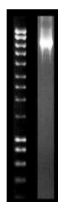
Product images:



DNA - 4x.



DNA - 20x.



DNA PCR Image