

## Product datasheet for **CD563351**

### Tissue Genomic DNA, Lung

#### Product data:

Product Type:	Genomic DNA
Disease State:	Other Disease
Diagnosis Category:	Chronic Obstructive Pulmonary Disease (COPD)
Tissue:	Lung
Frozen Sample ID:	FR0002C650
Case ID:	CI0000010670
Prep:	D
Vial ID:	DN000011F2
Tissue of Origin:	Lung
Site of Finding:	Lung
Appearance:	Lesional
Sample Diagnosis (from Pathology Verification):	Emphysema
Normal:	0%
Lesional:	100%
Tumor:	0%
Tumor Hypo/Acellular Stroma:	0%
Tumor Hypercellular Stroma:	0%
Necrosis:	0%
Pathology Verification notes from H&E review:	Inflammation: Mild Lymphoid infiltrate. Non Tumor Structures: 50% Alveoli, 50% Fibrovascular septa
Bioanalyzer Ratio (28S/18S):	1.99


[View online »](#)

**CASE Diagnosis (from medical center path report):** Adenocarcinoma of lung

**Age:** 56

**Gender:** Male

**Race:** White or Caucasian

**Tumor Grade:** AJCC G3: Poorly differentiated

**Minimum Stage Grouping:** IA

**T (Extent of Primary Tumor):** T1

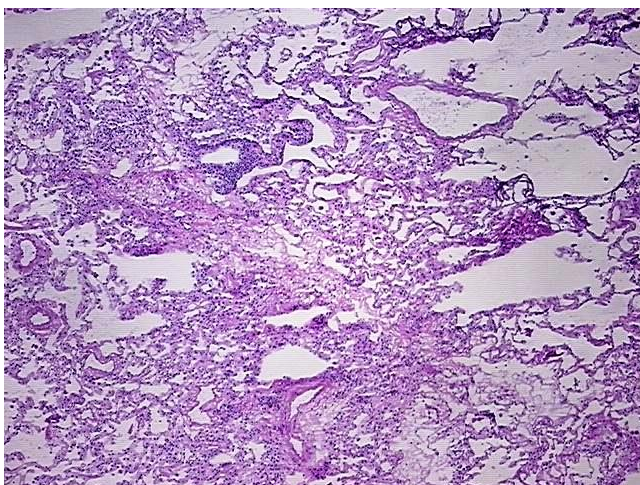
**N (Lymph node metastasis):** N0

**M (Distant metastasis):** MX

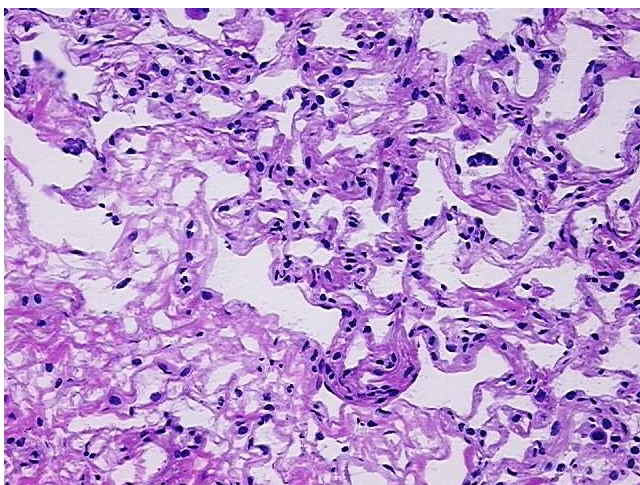
**Storage:** Store the total DNA -80°C.

**Stability:** These products are stable for one year from date of shipping when stored at -80°C without repeated freeze/thaws.

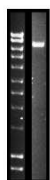
### Product images:



DNA - 4x.



DNA - 20x.



DNA PCR Image