

Product datasheet for **CD563350**

Tissue Genomic DNA, Ovary

Product data:

Product Type:	Genomic DNA
Disease State:	Cancer
Diagnosis Category:	Ovarian Cancer
Tissue:	Ovary
Frozen Sample ID:	FR0002EB7B
Case ID:	CI0000011328
Prep:	A
Vial ID:	DN000006B2
Tissue of Origin:	Ovary
Site of Finding:	Ovary
Appearance:	Tumor
Sample Diagnosis (from Pathology Verification):	Adenocarcinoma of ovary, papillary serous
Normal:	0%
Lesional:	0%
Tumor:	60%
Tumor Hypo/Acellular Stroma:	20%
Tumor Hypercellular Stroma:	20%
Necrosis:	0%
Pathology Verification notes from H&E review:	Tumor Stroma (Cellular): Desmoplastic reaction. Tumor Stroma (Hypo/Acellular): Hyalinization. Inflammation: Moderate Lymphoplasmacytic infiltrate
Bioanalyzer Ratio (28S/18S):	1.88


[View online »](#)

CASE Diagnosis (from medical center path report): Adenocarcinoma of ovary, papillary serous

Age: 65

Gender: Female

Race: White or Caucasian

Tumor Grade: FIGO G3: Poorly differentiated

Minimum Stage Grouping: IIIC

T (Extent of Primary Tumor): T3c

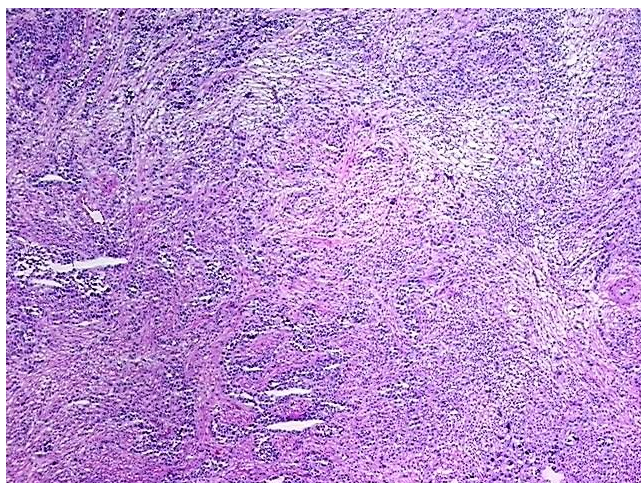
N (Lymph node metastasis): N1

M (Distant metastasis): MX

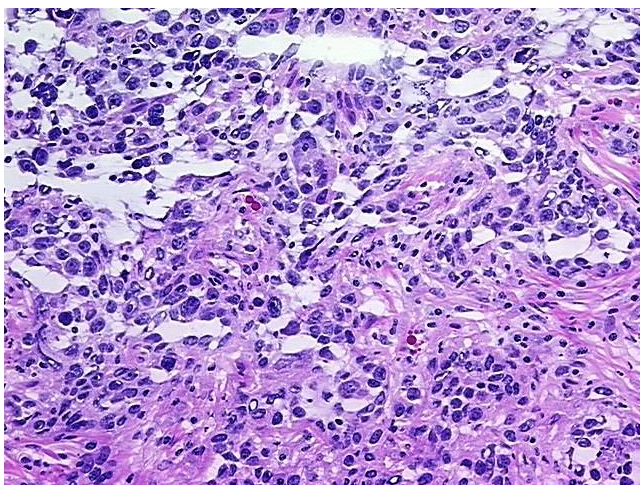
Storage: Store the total DNA -80°C.

Stability: These products are stable for one year from date of shipping when stored at -80°C without repeated freeze/thaws.

Product images:



DNA - 4x.



DNA - 20x.



DNA PCR Image