

## Product datasheet for **CD563331**

### Tissue Genomic DNA, Kidney

#### Product data:

Product Type:	Genomic DNA
Disease State:	Cancer
Diagnosis Category:	Renal Cell Carcinoma
Tissue:	Kidney
Frozen Sample ID:	FR00002DD3
Case ID:	CU0000000782
Prep:	C
Vial ID:	DN0000069E
Tissue of Origin:	Kidney
Site of Finding:	Kidney
Appearance:	Tumor
Sample Diagnosis (from Pathology Verification):	Carcinoma of kidney, renal cell, clear cell
Normal:	0%
Lesional:	0%
Tumor:	75%
Tumor Hypo/Acellular Stroma:	20%
Tumor Hypercellular Stroma:	5%
Necrosis:	0%
Pathology Verification notes from H&E review:	Inflammatory cells present in hypercellular stroma
Bioanalyzer Ratio (28S/18S):	2.01



[View online »](#)

**CASE Diagnosis (from medical center path report):** Carcinoma of kidney, renal cell, clear cell

**Age:** 51

**Gender:** Female

**Tumor Grade:** Fuhrman G2: Nuclei slightly irregular

**Minimum Stage Grouping:** I

**T (Extent of Primary Tumor):** T1b

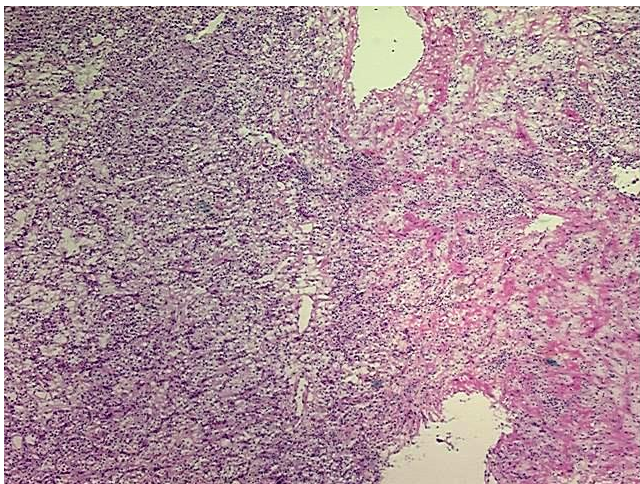
**N (Lymph node metastasis):** N0

**M (Distant metastasis):** MX

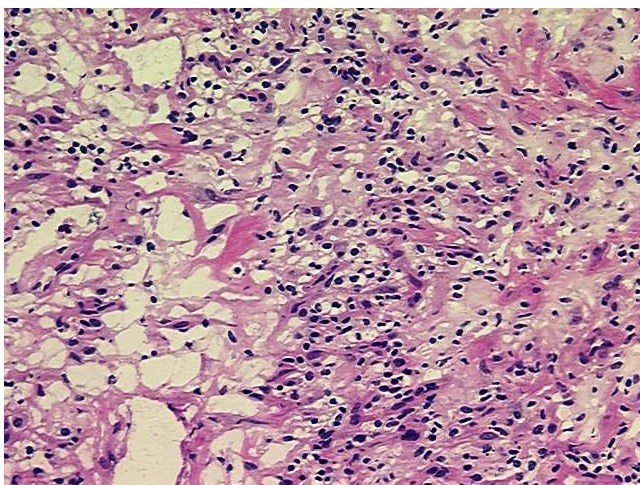
**Storage:** Store the total DNA -80°C.

**Stability:** These products are stable for one year from date of shipping when stored at -80°C without repeated freeze/thaws.

### Product images:



DNA - 4x.



DNA - 20x.



DNA PCR Image