

## Product datasheet for **CD563316**

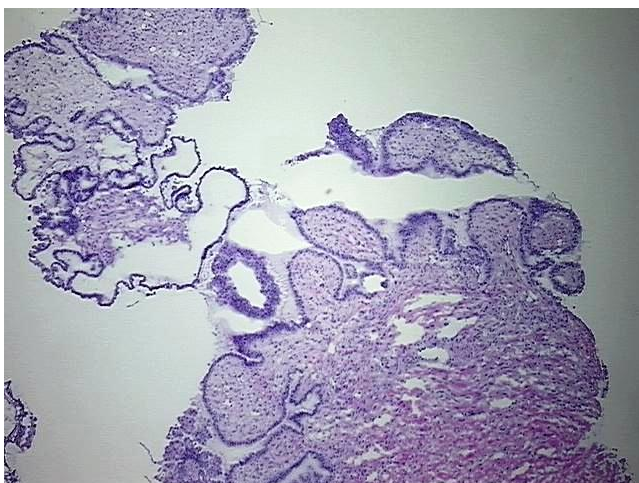
### Tissue Genomic DNA, Ovary: left

#### Product data:

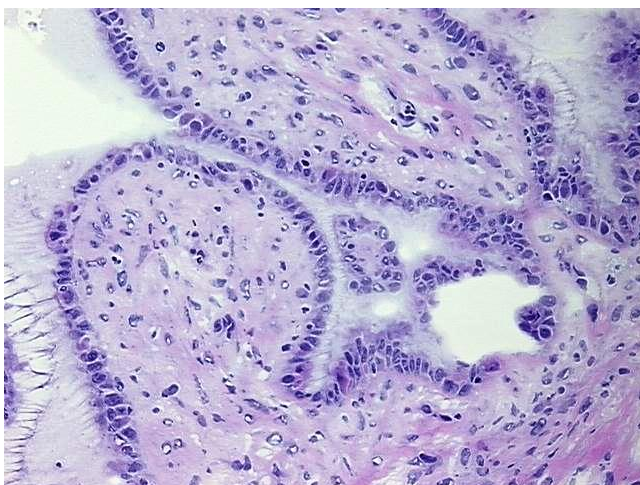
|                                                   |                                    |
|---------------------------------------------------|------------------------------------|
| Product Type:                                     | Genomic DNA                        |
| Disease State:                                    | Other Disease                      |
| Diagnosis Category:                               | Borderline Ovarian Tumor           |
| Tissue:                                           | Ovary                              |
| Frozen Sample ID:                                 | FR0003A1B2                         |
| Case ID:                                          | CI0000015414                       |
| Prep:                                             | A                                  |
| Vial ID:                                          | DN00001324                         |
| Tissue of Origin:                                 | Ovary: left                        |
| Site of Finding:                                  | Ovary: left                        |
| Appearance:                                       | Tumor                              |
| Sample Diagnosis (from Pathology Verification):   | Tumor of ovary, serous, borderline |
| Normal:                                           | 20%                                |
| Lesional:                                         | 0%                                 |
| Tumor:                                            | 60%                                |
| Tumor Hypo/Acellular Stroma:                      | 0%                                 |
| Tumor Hypercellular Stroma:                       | 20%                                |
| Necrosis:                                         | 0%                                 |
| Bioanalyzer Ratio (28S/18S):                      | 2.1                                |
| CASE Diagnosis (from medical center path report): | Tumor of ovary, serous, borderline |
| Age:                                              | 42                                 |


[View online »](#)

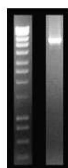
|                              |                                                                                                                  |
|------------------------------|------------------------------------------------------------------------------------------------------------------|
| Gender:                      | Female                                                                                                           |
| Race:                        | White or Caucasian                                                                                               |
| Tumor Grade:                 | AJCC GB: Borderline malignancy                                                                                   |
| Minimum Stage Grouping:      | IA                                                                                                               |
| T (Extent of Primary Tumor): | T1a                                                                                                              |
| N (Lymph node metastasis):   | N0                                                                                                               |
| M (Distant metastasis):      | MX                                                                                                               |
| Storage:                     | Store the total DNA -80°C.                                                                                       |
| Stability:                   | These products are stable for one year from date of shipping when stored at -80°C without repeated freeze/thaws. |

**Product images:**


DNA - 4x.



DNA - 20x.



DNA PCR Image