

## Product datasheet for **CD563223**

### Tissue Genomic DNA, Liver

#### Product data:

Product Type:	Genomic DNA
Disease State:	Other Disease
Diagnosis Category:	Hepatitis
Tissue:	Liver
Frozen Sample ID:	FR6A3898DD
Case ID:	CU0000014634
Prep:	C
Vial ID:	DN000006CA
Tissue of Origin:	Liver
Site of Finding:	Liver
Appearance:	Lesional
Sample Diagnosis (from Pathology Verification):	Hepatitis, chronic
Normal:	0%
Lesional:	100%
Tumor:	0%
Tumor Hypo/Acellular Stroma:	0%
Tumor Hypercellular Stroma:	0%
Necrosis:	0%
Pathology Verification notes from H&E review:	Inflammation: Mild Lymphoplasmacytic infiltrate. Non Tumor Structures: 85% Lobules, 15% Triads
Bioanalyzer Ratio (28S/18S):	1.72


[View online »](#)

**CASE Diagnosis (from medical center path report):** Carcinoma of liver, hepatocellular

**Age:** 68

**Gender:** Male

**Tumor Grade:** AJCC G2: Moderately differentiated

**Minimum Stage Grouping:** IIIA

**T (Extent of Primary Tumor):** T3

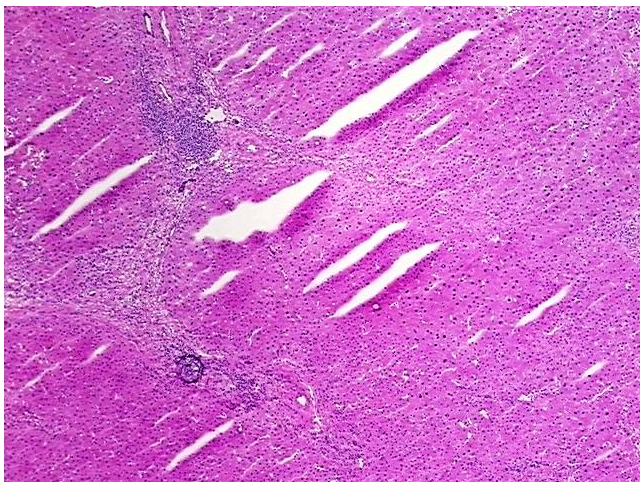
**N (Lymph node metastasis):** NX

**M (Distant metastasis):** MX

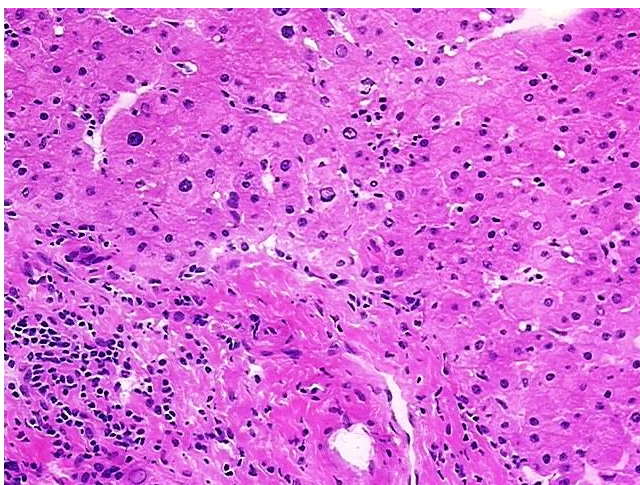
**Storage:** Store the total DNA -80°C.

**Stability:** These products are stable for one year from date of shipping when stored at -80°C without repeated freeze/thaws.

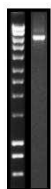
### Product images:



DNA - 4x.



DNA - 20x.



DNA PCR Image