

## Product datasheet for **CD563160**

### Tissue Genomic DNA, Prostate

#### Product data:

Product Type:	Genomic DNA
Disease State:	Other Disease
Diagnosis Category:	Benign Prostatic Hyperplasia (BPH)
Tissue:	Prostate
Frozen Sample ID:	FR000252B8
Case ID:	CI0000006430
Prep:	A
Vial ID:	DN00001412
Tissue of Origin:	Prostate
Site of Finding:	Prostate
Appearance:	Lesional
Sample Diagnosis (from Pathology Verification):	Hyperplasia of prostate
Normal:	0%
Lesional:	100%
Tumor:	0%
Tumor Hypo/Acellular Stroma:	0%
Tumor Hypercellular Stroma:	0%
Necrosis:	0%
Pathology Verification notes from H&E review:	Non Tumor Structures: 35% Epithelium, 65% Fibromuscular stroma
Bioanalyzer Ratio (28S/18S):	2.04


[View online »](#)

CASE Diagnosis (from medical center path report):

Hyperplasia of prostate

Age: 72

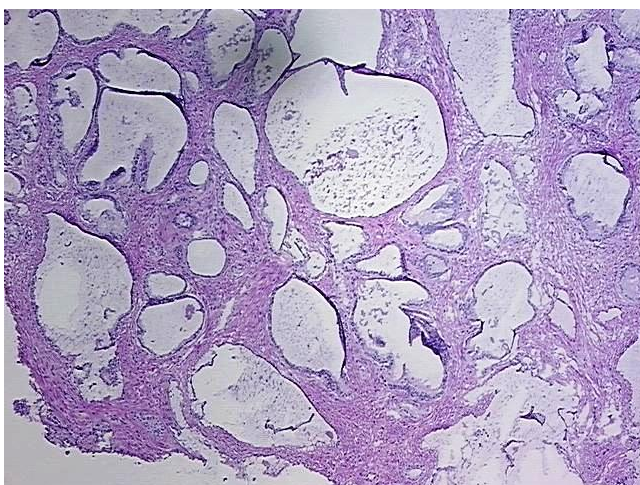
Gender: Male

Race: White or Caucasian

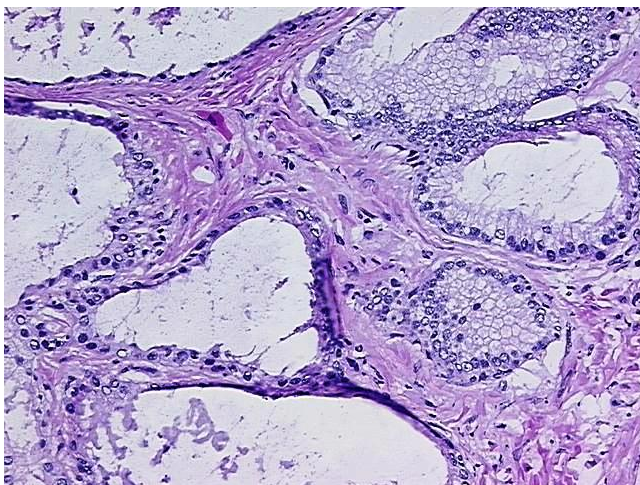
Storage: Store the total DNA -80°C.

Stability: These products are stable for one year from date of shipping when stored at -80°C without repeated freeze/thaws.

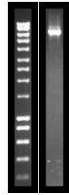
### Product images:



DNA - 4x.



DNA - 20x.



DNA PCR Image