

Product datasheet for **CD563158**

Tissue Genomic DNA, Ovary: left

Product data:

Product Type:	Genomic DNA
Disease State:	Other Disease
Diagnosis Category:	Borderline Ovarian Tumor
Tissue:	Ovary
Frozen Sample ID:	FR0003116B
Case ID:	CU0000011128
Prep:	B
Vial ID:	DN00000279
Tissue of Origin:	Ovary: left
Site of Finding:	Ovary: left
Appearance:	Tumor
Sample Diagnosis (from Pathology Verification):	Cystadenofibroma of ovary, serous, borderline
Normal:	0%
Lesional:	0%
Tumor:	100%
Tumor Hypo/Acellular Stroma:	0%
Tumor Hypercellular Stroma:	0%
Necrosis:	0%
Pathology Verification notes from H&E review:	Tumor: 60% epithelial component, 40% stromal component
Bioanalyzer Ratio (28S/18S):	2.01

[View online »](#)

CASE Diagnosis (from medical center path report): Cystadenofibroma of ovary, serous, borderline

Age: 57

Gender: Female

Tumor Grade: AJCC GB: Borderline malignancy

Minimum Stage IA

Grouping:

T (Extent of Primary Tumor): T1a

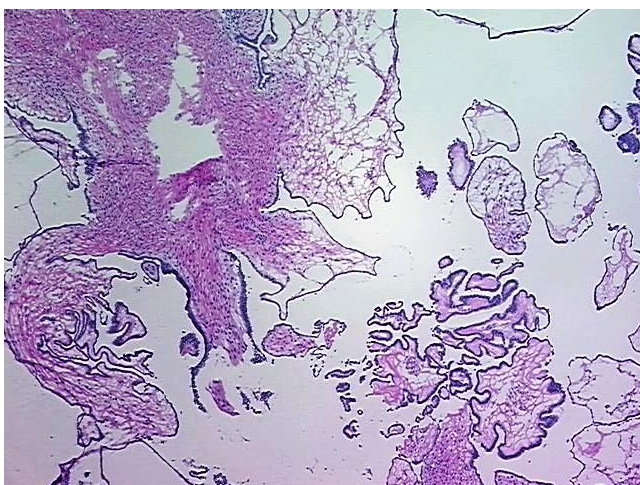
N (Lymph node metastasis): N0

M (Distant metastasis): MX

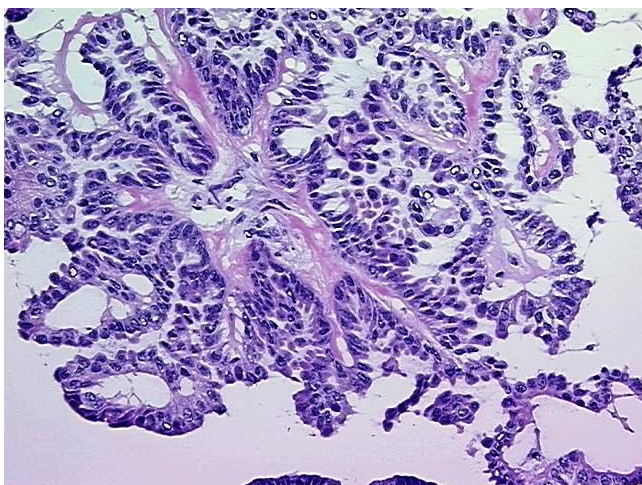
Storage: Store the total DNA -80°C.

Stability: These products are stable for one year from date of shipping when stored at -80°C without repeated freeze/thaws.

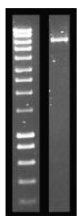
Product images:



DNA - 4x.



DNA - 20x.



DNA PCR Image