

Product datasheet for **CB814842**

Frozen Tissue Blocks, Heart

Product data:

Product Type:	Frozen Blocks
Disease State:	Normal
Diagnosis Category:	Normal
Tissue:	Heart
Frozen Sample ID:	SX00002A09
Case ID:	CX0000000425
Tissue of Origin:	Heart
Site of Finding:	Heart
Appearance:	Normal
Sample Diagnosis (from Pathology Verification):	Within normal limits
Normal:	100%
Lesional:	0%
Tumor:	0%
Tumor Hypo/Acellular Stroma:	0%
Tumor Hypercellular Stroma:	0%
Necrosis:	0%
Pathology Verification notes from H&E review:	1% Endocardium, 95% Myocardium, 4% Epicardium
CASE Diagnosis (from medical center path report):	Within normal limits
Age:	28
Gender:	Male
Tumor Grade:	n/a



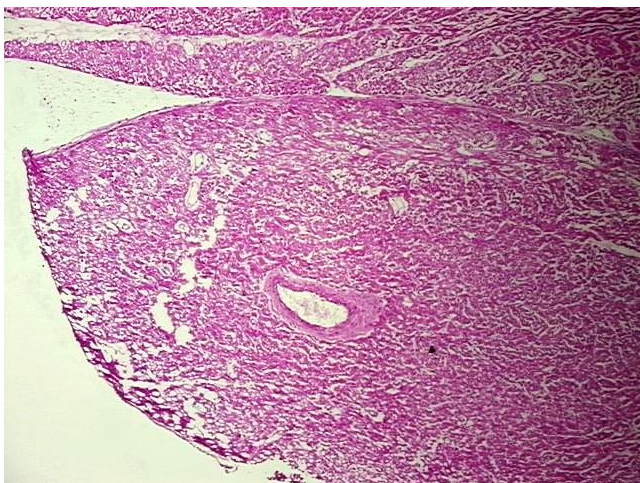
[View online »](#)

Minimum Stage Grouping: n/a

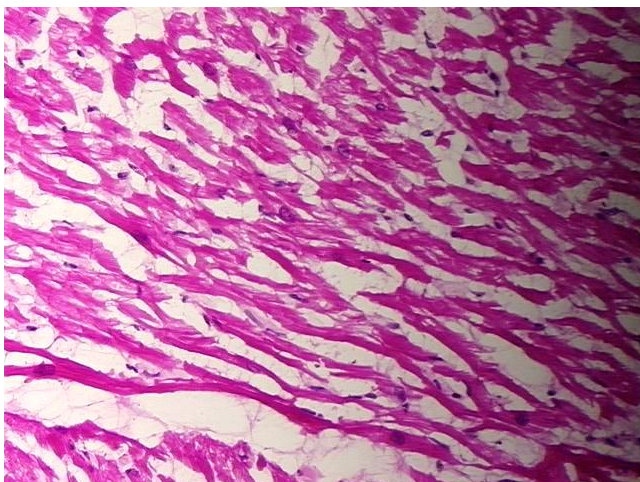
Storage: Store frozen tissue blocks at -80°C.

Stability: Frozen tissue blocks are stable for at least one year from date of shipping when stored at -80°C.

Product images:



4x Image



20x Image