

Product datasheet for **CB814685**

Frozen Tissue Blocks, Pancreas

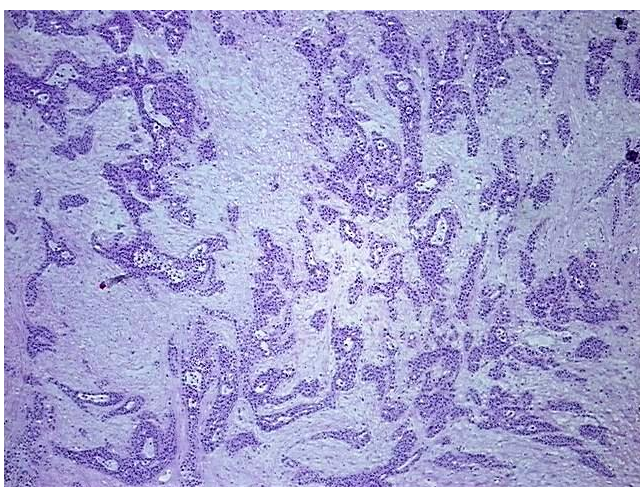
Product data:

Product Type:	Frozen Blocks
Disease State:	Cancer
Diagnosis Category:	Pancreatic Cancer
Tissue:	Pancreas
Frozen Sample ID:	SX000026D3
Case ID:	CX0000000342
Tissue of Origin:	Pancreas
Site of Finding:	Colon
Appearance:	Tumor
Sample Diagnosis (from Pathology Verification):	Adenocarcinoma of pancreas, metastatic
Normal:	5%
Lesional:	0%
Tumor:	60%
Tumor Hypo/Acellular Stroma:	0%
Tumor Hypercellular Stroma:	35%
Necrosis:	0%
Pathology Verification notes from H&E review:	Tumor Stroma (Cellular): Desmoplastic reaction; Other Features/Comments: Tumor area: 5 mm x 3 mm
CASE Diagnosis (from medical center path report):	Adenocarcinoma of pancreas, metastatic
Age:	72
Gender:	Female
Tumor Grade:	Not Reported

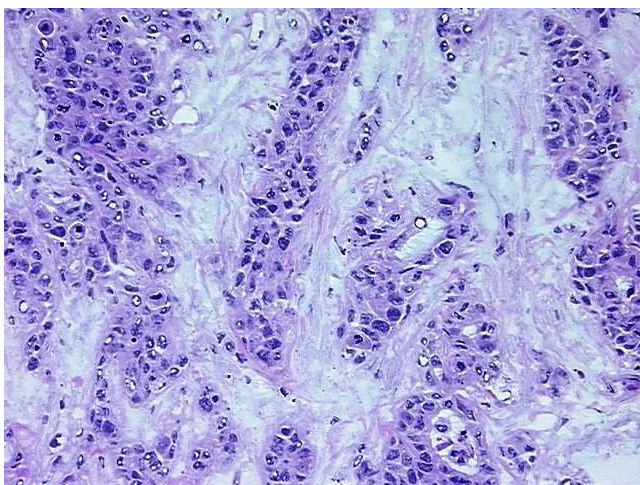


[View online »](#)

Minimum Stage Grouping:	IV
T (Extent of Primary Tumor):	pTX
N (Lymph node metastasis):	pNX
M (Distant metastasis):	pM1
Storage:	Store frozen tissue blocks at -80°C.
Stability:	Frozen tissue blocks are stable for at least one year from date of shipping when stored at -80°C.

Product images:

4x Image



20x Image