

## Product datasheet for **CB808927**

### FFPE Tissue Blocks, Brain

#### Product data:

|   |                               |
|---|-------------------------------|
| Product Type:                                     | FFPE Blocks                   |
| Disease State:                                    | Cancer                        |
| Diagnosis Category:                               | Brain Cancer                  |
| Tissue:   | Brain                         |
| Frozen Sample ID:                                 | PA15477091                    |
| Case ID:  | CU0000006796                  |
| Tissue of Origin:                                 | Brain                         |
| Site of Finding:                                  | Brain                         |
| Appearance:                                       | Tumor                         |
| Sample Diagnosis (from Pathology Verification):   | Oligodendroglioma, anaplastic |
| Normal:   | 0%                            |
| Lesional:   | 0%                            |
| Tumor:  | 99%                           |
| Tumor Hypo/Acellular Stroma:                      | 0%                            |
| Tumor Hypercellular Stroma:                       | 1%                            |
| Necrosis:   | 0%                            |
| CASE Diagnosis (from medical center path report): | Oligodendroglioma, anaplastic |
| Age:  | 39                            |
| Gender:   | Female                        |
| Tumor Grade:                                      | WHO Grade III                 |
| Minimum Stage Grouping:                           | Not Reported                  |

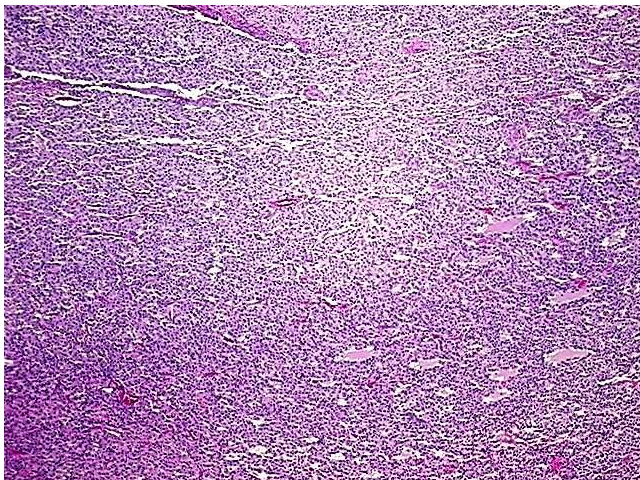


[View online »](#)

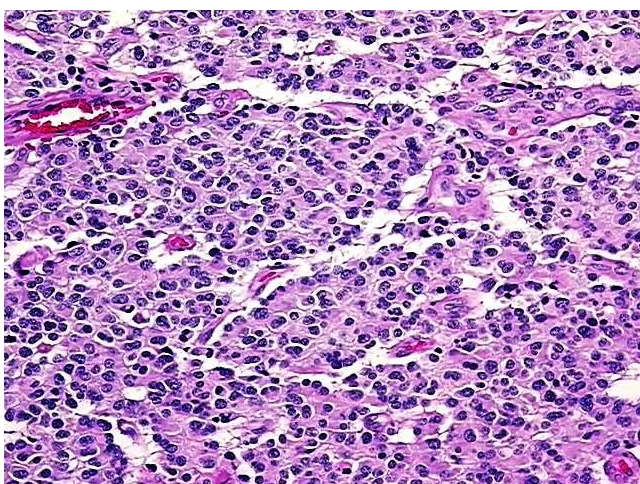
**Storage:** Store FFPE tissue blocks at room temperature.

**Stability:** FFPE tissue blocks are stable for at least one year from date of shipping when stored at room temperature.

**Product images:**



4x Image



20x Image