

Product datasheet for **CB700048**

FFPE Tissue Blocks, Lung

Product data:

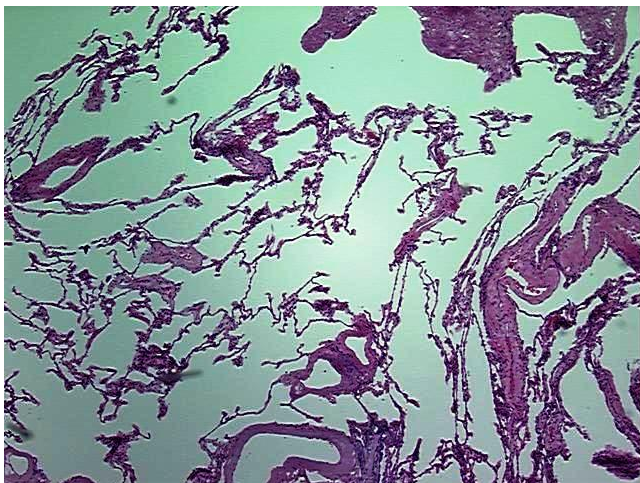
Product Type:	FFPE Blocks
Disease State:	Other Disease
Diagnosis Category:	Chronic Obstructive Pulmonary Disease (COPD)
Tissue:	Lung
Frozen Sample ID:	PA00000755
Case ID:	CI0000000020
Tissue of Origin:	Lung
Site of Finding:	Lung
Appearance:	Lesion
Sample Diagnosis (from Pathology Verification):	Emphysema, centrilobular
Normal:	0%
Lesional:	80%
Tumor:	0%
Tumor Hypo/Acellular Stroma:	20%
Tumor Hypercellular Stroma:	0%
Necrosis:	0%
Pathology Verification notes from H&E review:	50% Alveoli, 20% Bronchioles and Cartilage, 10% Vessels
CASE Diagnosis (from medical center path report):	Emphysema, bullous
Age:	67
Gender:	Female
Storage:	Store FFPE tissue blocks at room temperature.



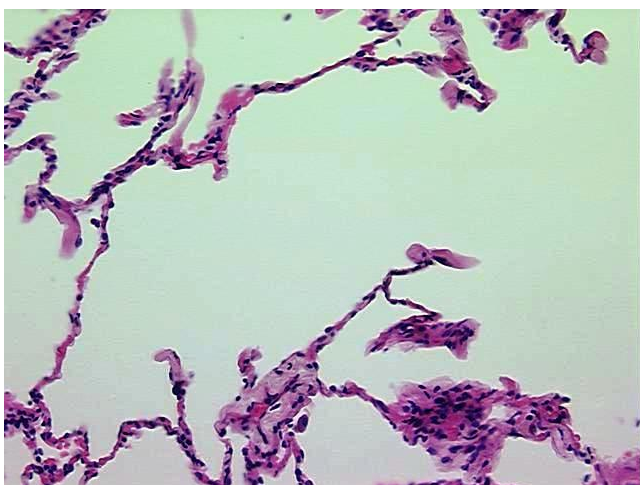
[View online »](#)

Stability: FFPE tissue blocks are stable for at least one year from date of shipping when stored at room temperature.

Product images:



4x Image



20x Image