

## Product datasheet for CB651771

### Frozen Tissue Blocks, Lung: left lower lobe

#### Product data:

Product Type:	Frozen Blocks
Disease State:	Normal
Diagnosis Category:	Normal
Tissue:	Lung
Frozen Sample ID:	FR00046F7D
Case ID:	CU0000018818
Tissue of Origin:	Lung: left lower lobe
Site of Finding:	Lung: left lower lobe
Appearance:	Normal
Sample Diagnosis (from Pathology Verification):	Within normal limits
Normal:	100%
Lesional:	0%
Tumor:	0%
Tumor Hypo/Acellular Stroma:	0%
Tumor Hypercellular Stroma:	0%
Necrosis:	0%
Pathology Verification notes from H&E review:	60% Alveoli, 40% Fibrovascular septa
CASE Diagnosis (from medical center path report):	Adenocarcinoma of lung
Age:	64
Gender:	Female
Tumor Grade:	n/a

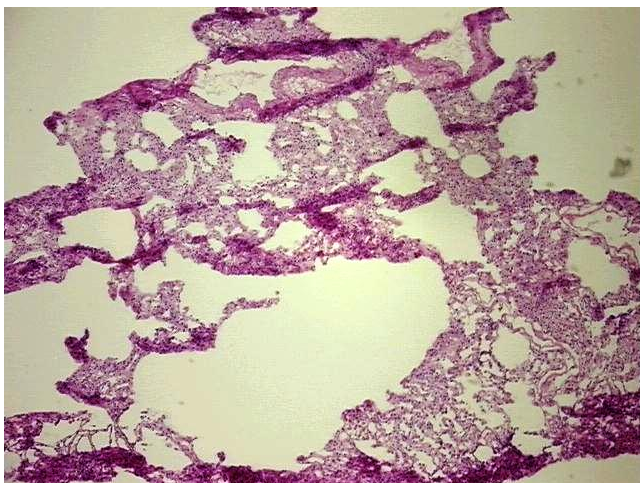

[View online »](#)

Minimum Stage  
Grouping: n/a

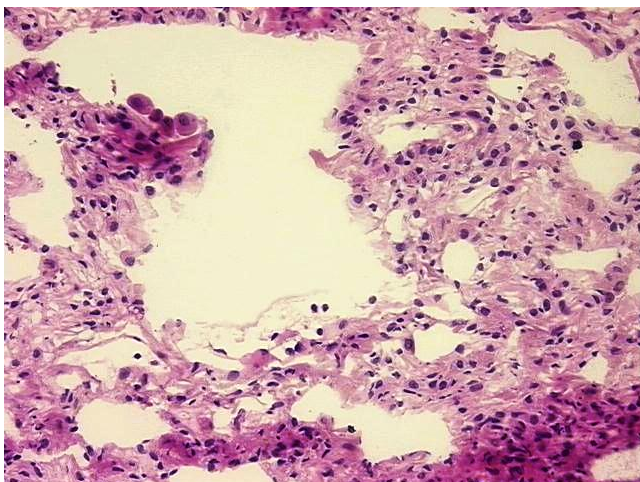
Storage: Store frozen tissue blocks at -80°C.

Stability: Frozen tissue blocks are stable for at least one year from date of shipping when stored at -80°C.

### Product images:



4x Image



20x Image