

Product datasheet for **CB651520**

Frozen Tissue Blocks, Ovary: bilateral

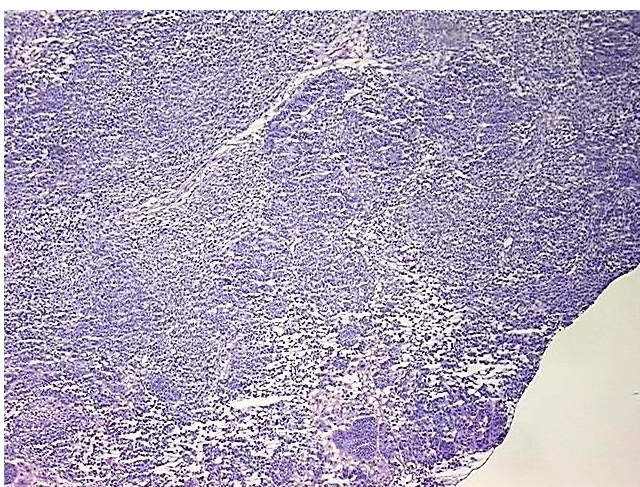
Product data:

Product Type:	Frozen Blocks
Disease State:	Cancer
Diagnosis Category:	Ovarian Cancer
Tissue:	Ovary
Frozen Sample ID:	FR000433BB
Case ID:	CU0000018795
Tissue of Origin:	Ovary: bilateral
Site of Finding:	Unknown tissue
Appearance:	Tumor
Sample Diagnosis (from Pathology Verification):	Adenocarcinoma of ovary, endometrioid, metastatic
Normal:	0%
Lesional:	0%
Tumor:	90%
Tumor Hypo/Acellular Stroma:	0%
Tumor Hypercellular Stroma:	10%
Necrosis:	0%
Pathology Verification notes from H&E review:	Tumor: In addition to typical endometrioid adenocarcinoma, there are many spindle cell and stromal patterns
CASE Diagnosis (from medical center path report):	Adenocarcinoma of ovary, endometrioid
Age:	34
Gender:	Female
Tumor Grade:	FIGO G3: Poorly differentiated

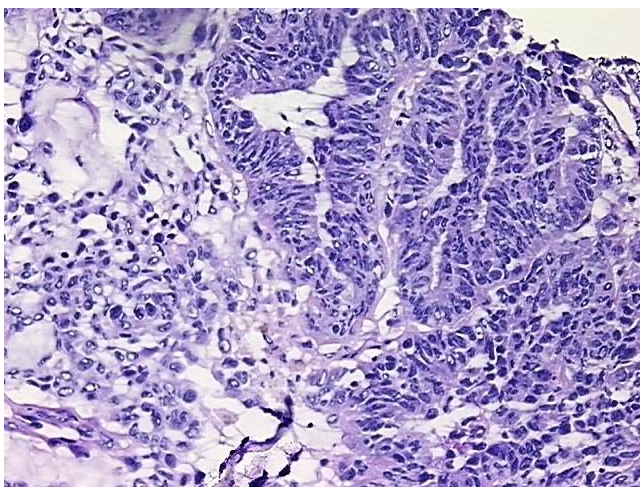


[View online »](#)

Minimum Stage Grouping:	IIB
T (Extent of Primary Tumor):	pT2b
N (Lymph node metastasis):	pNX
M (Distant metastasis):	pMX
Storage:	Store frozen tissue blocks at -80°C.
Stability:	Frozen tissue blocks are stable for at least one year from date of shipping when stored at -80°C.

Product images:

4x Image



20x Image