

Product datasheet for **CB649994**

Frozen Tissue Blocks, Rectum

Product data:

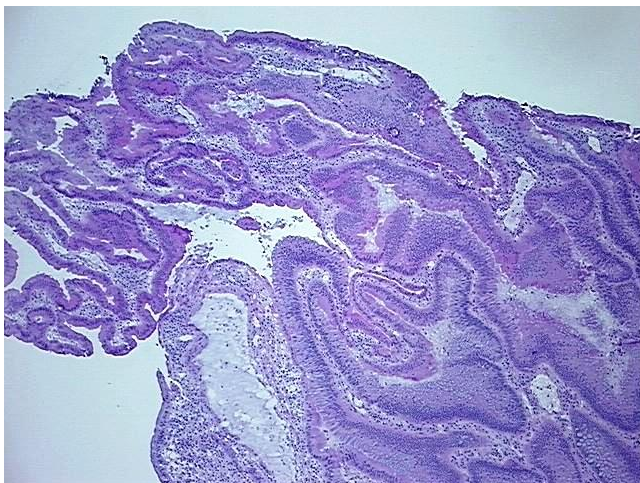
Product Type:	Frozen Blocks
Disease State:	Cancer
Diagnosis Category:	Colorectal Cancer
Tissue:	Colon
Frozen Sample ID:	FR00041C81
Case ID:	CU0000016258
Tissue of Origin:	Rectum
Site of Finding:	Rectum
Appearance:	Tumor
Sample Diagnosis (from Pathology Verification):	Adenocarcinoma of colon
Normal:	10%
Lesional:	0%
Tumor:	80%
Tumor Hypo/Acellular Stroma:	0%
Tumor Hypercellular Stroma:	10%
Necrosis:	0%
Pathology Verification notes from H&E review:	Tumor Stroma (Cellular): Desmoplastic reaction, Inflammatory cells; Inflammation: Mild Mixed inflammatory infiltrate; Other Features/Comments: Tumor area: 8 mm x 3 mm
CASE Diagnosis (from medical center path report):	Adenocarcinoma of colon
Age:	64
Gender:	Female
Storage:	Store frozen tissue blocks at -80°C.



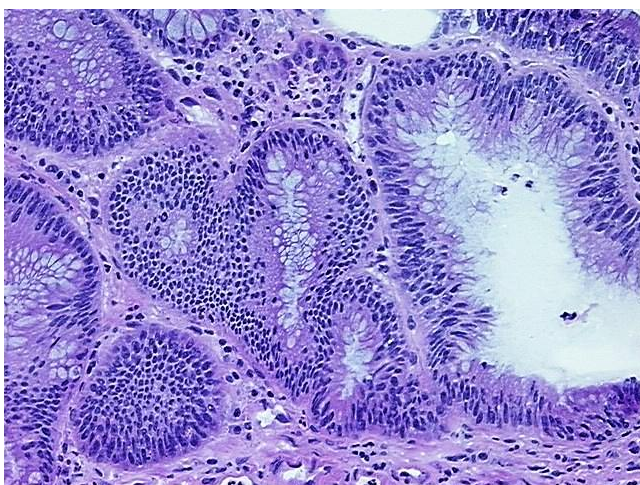
[View online »](#)

Stability: Frozen tissue blocks are stable for at least one year from date of shipping when stored at -80°C.

Product images:



4x Image



20x Image