

Product datasheet for **CB648713**

Frozen Tissue Blocks, Testis

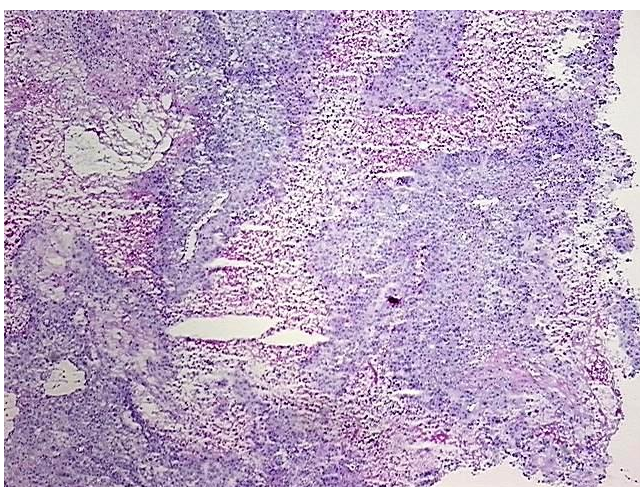
Product data:

Product Type:	Frozen Blocks
Disease State:	Other Disease
Diagnosis Category:	Germ Cell Tumor
Tissue:	Testis
Frozen Sample ID:	FR000420CA
Case ID:	CU0000014842
Tissue of Origin:	Testis
Site of Finding:	Testis
Appearance:	Tumor
Sample Diagnosis (from Pathology Verification):	Tumor of testis, mixed germ cell
Normal:	0%
Lesional:	0%
Tumor:	60%
Tumor Hypo/Acellular Stroma:	10%
Tumor Hypercellular Stroma:	10%
Necrosis:	20%
Pathology Verification notes from H&E review:	Tumor: Predominantly embryonal carcinoma; Tumor Stroma (Hypo/Acellular): prominent hemorrhage
CASE Diagnosis (from medical center path report):	Tumor of testis, mixed germ cell
Age:	28
Gender:	Male
Tumor Grade:	Not Reported

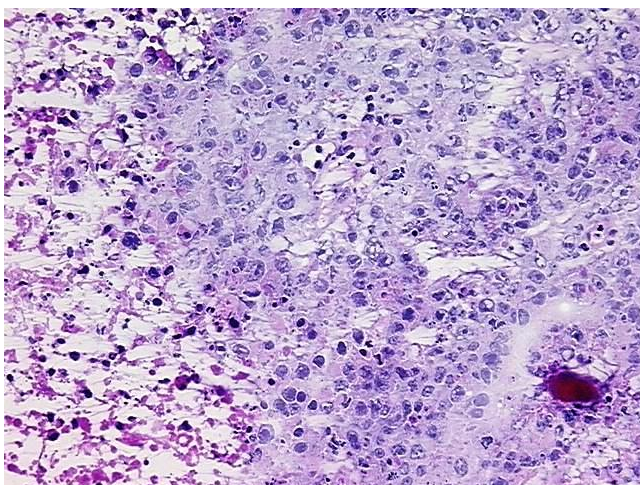


[View online »](#)

Minimum Stage Grouping:	IA
T (Extent of Primary Tumor):	pT1
N (Lymph node metastasis):	pNX
M (Distant metastasis):	pMX
Storage:	Store frozen tissue blocks at -80°C.
Stability:	Frozen tissue blocks are stable for at least one year from date of shipping when stored at -80°C.

Product images:

4x Image



20x Image