

Product datasheet for **CB648601**

Frozen Tissue Blocks, Pancreas

Product data:

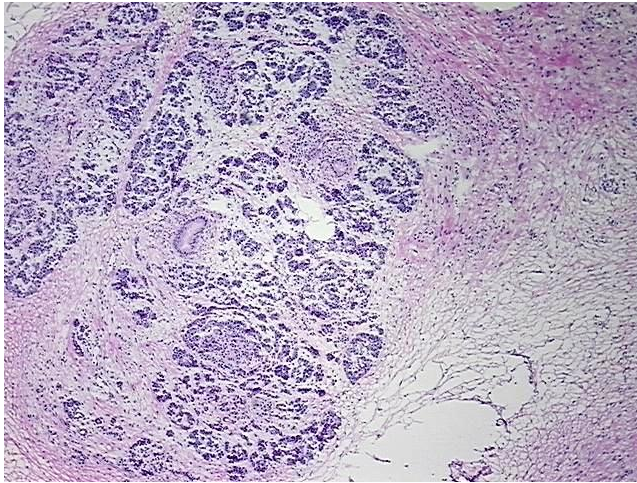
Product Type:	Frozen Blocks
Disease State:	Other Disease
Diagnosis Category:	Pancreatitis
Tissue:	Pancreas
Frozen Sample ID:	FR00041385
Case ID:	CU0000014823
Tissue of Origin:	Pancreas
Site of Finding:	Pancreas
Appearance:	Lesion
Sample Diagnosis (from Pathology Verification):	Pancreatitis, chronic
Normal:	0%
Lesional:	100%
Tumor:	0%
Tumor Hypo/Acellular Stroma:	0%
Tumor Hypercellular Stroma:	0%
Necrosis:	0%
Pathology Verification notes from H&E review:	Inflammation: Moderate Mixed inflammatory infiltrate; 50% Exocrine epithelium, 10% Ducts, 35% fibrosis, 5% Lymphoid nodules
CASE Diagnosis (from medical center path report):	Pancreatitis, chronic
Age:	43
Gender:	Male
Storage:	Store frozen tissue blocks at -80°C.



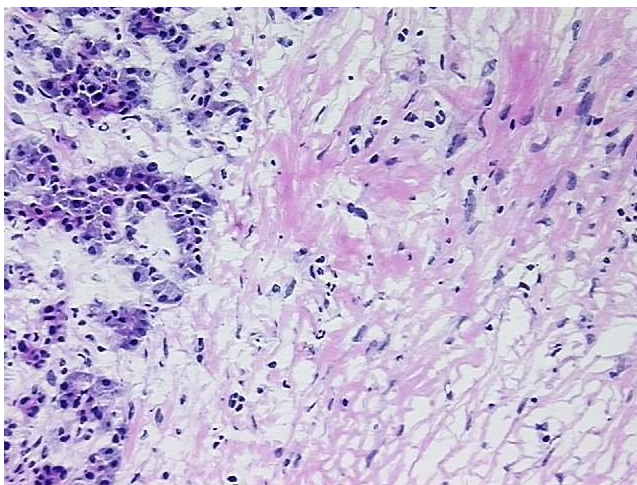
[View online »](#)

Stability: Frozen tissue blocks are stable for at least one year from date of shipping when stored at -80°C.

Product images:



4x Image



20x Image