

Product datasheet for **CB648581**

Frozen Tissue Blocks, Lung: right upper lobe

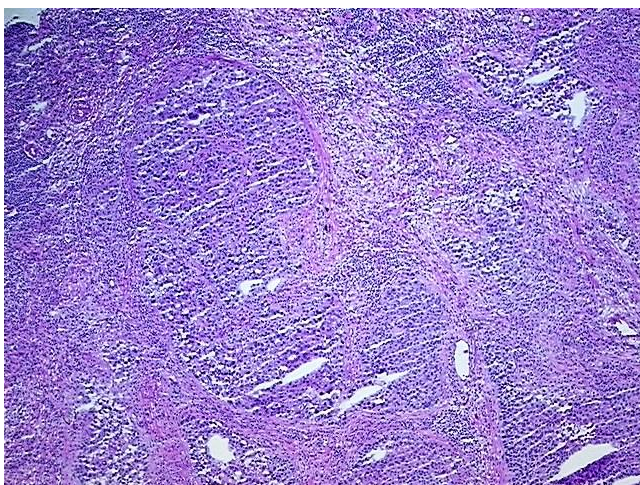
Product data:

Product Type:	Frozen Blocks
Disease State:	Cancer
Diagnosis Category:	Lung Cancer
Tissue:	Lung
Frozen Sample ID:	FR5B346C29
Case ID:	CU0000014818
Tissue of Origin:	Lung: right upper lobe
Site of Finding:	Lung: right upper lobe
Appearance:	Tumor
Sample Diagnosis (from Pathology Verification):	Carcinoma of lung, squamous cell
Normal:	40%
Lesional:	0%
Tumor:	50%
Tumor Hypo/Acellular Stroma:	0%
Tumor Hypercellular Stroma:	9%
Necrosis:	1%
Pathology Verification notes from H&E review:	Tumor Stroma (Cellular): Desmoplastic reaction; Inflammation: Severe Mixed inflammatory infiltrate
CASE Diagnosis (from medical center path report):	Carcinoma of lung, squamous cell
Age:	63
Gender:	Male
Tumor Grade:	AJCC G2: Moderately differentiated

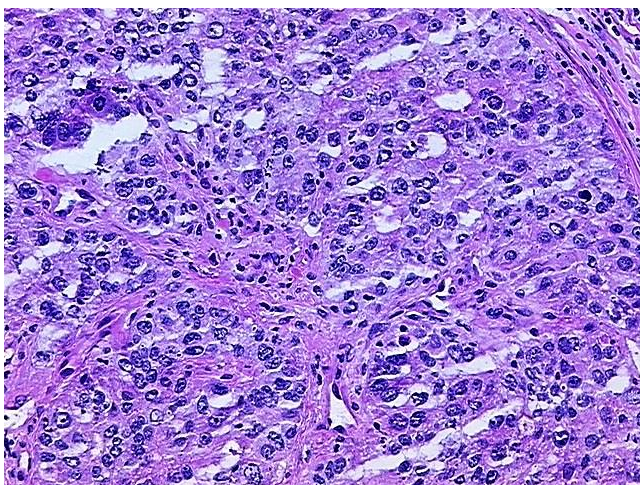


[View online »](#)

Minimum Stage Grouping:	IA
T (Extent of Primary Tumor):	pT1
N (Lymph node metastasis):	pN0
M (Distant metastasis):	pMX
Storage:	Store frozen tissue blocks at -80°C.
Stability:	Frozen tissue blocks are stable for at least one year from date of shipping when stored at -80°C.

Product images:

4x Image



20x Image