

Product datasheet for **CB647874**

Frozen Tissue Blocks, Colon: transverse

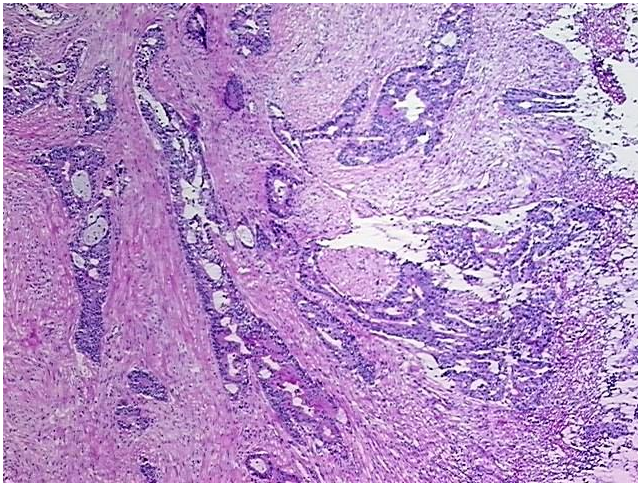
Product data:

Product Type:	Frozen Blocks
Disease State:	Cancer
Diagnosis Category:	Colorectal Cancer
Tissue:	Colon
Frozen Sample ID:	FR5B344C31
Case ID:	CU0000014748
Tissue of Origin:	Colon: transverse
Site of Finding:	Colon: transverse
Appearance:	Tumor
Sample Diagnosis (from Pathology Verification):	Adenocarcinoma of colon
Normal:	35%
Lesional:	0%
Tumor:	30%
Tumor Hypo/Acellular Stroma:	0%
Tumor Hypercellular Stroma:	20%
Necrosis:	15%
Pathology Verification notes from H&E review:	Non Tumor Structures: 100% Muscle
CASE Diagnosis (from medical center path report):	Adenocarcinoma of colon
Age:	83
Gender:	Female
Tumor Grade:	AJCC G1: Well differentiated

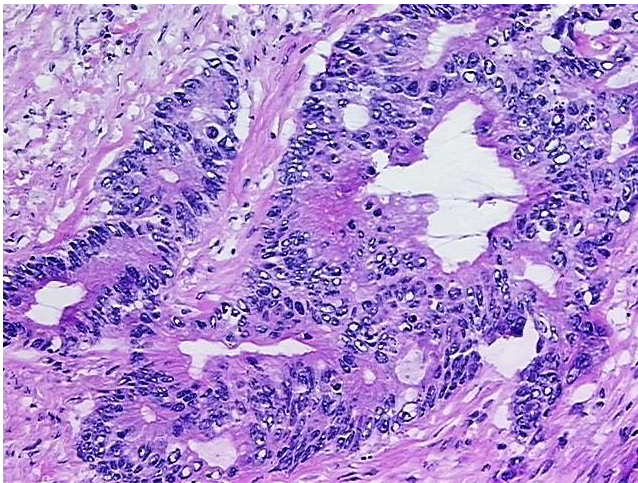


[View online »](#)

Minimum Stage Grouping:	IIA
T (Extent of Primary Tumor):	pT3
N (Lymph node metastasis):	pN0
M (Distant metastasis):	pMX
Storage:	Store frozen tissue blocks at -80°C.
Stability:	Frozen tissue blocks are stable for at least one year from date of shipping when stored at -80°C.

Product images:

4x Image



20x Image