

## Product datasheet for **CB645829**

### Frozen Tissue Blocks, Breast

#### Product data:

Product Type:	Frozen Blocks
Disease State:	Normal
Diagnosis Category:	Normal
Tissue:	Breast
Frozen Sample ID:	FR00039BA9
Case ID:	CU0000014398
Tissue of Origin:	Breast
Site of Finding:	Breast
Appearance:	Normal
Sample Diagnosis (from Pathology Verification):	Within normal limits
Normal:	100%
Lesional:	0%
Tumor:	0%
Tumor Hypo/Acellular Stroma:	0%
Tumor Hypercellular Stroma:	0%
Necrosis:	0%
Pathology Verification notes from H&E review:	5% Glandular epithelium, 5% Adipose tissue, 90% fibrotic stroma
CASE Diagnosis (from medical center path report):	Adenocarcinoma of breast, ductal, lobular
Age:	42
Gender:	Female
Tumor Grade:	n/a



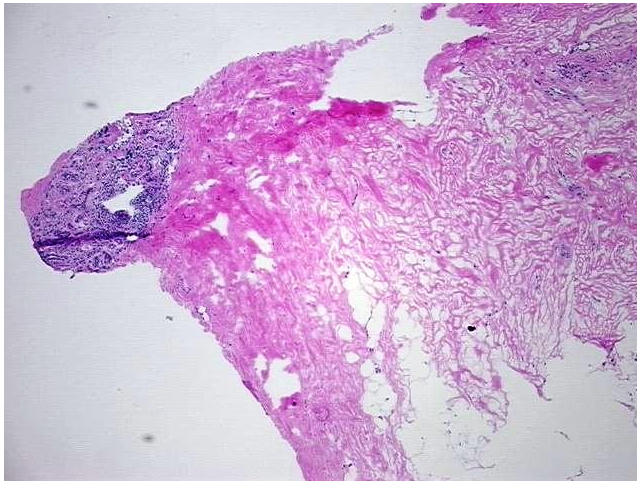
[View online »](#)

Minimum Stage  
Grouping: n/a

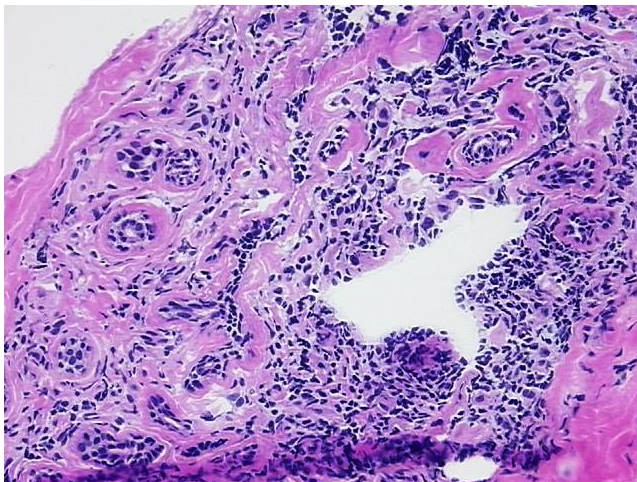
Storage: Store frozen tissue blocks at -80°C.

Stability: Frozen tissue blocks are stable for at least one year from date of shipping when stored at -80°C.

### Product images:



4x Image



20x Image