

Product datasheet for **CB639504**

Frozen Tissue Blocks, Ovary: left

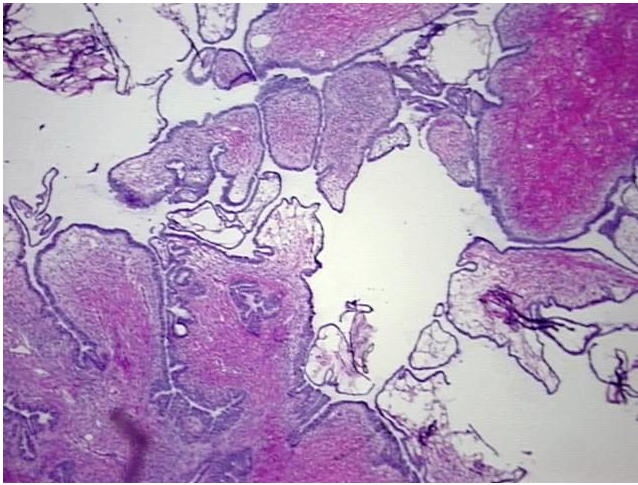
Product data:

| | |
|---|--|
| Product Type: | Frozen Blocks |
| Disease State: | Other Disease |
| Diagnosis Category: | Borderline Ovarian Tumor |
| Tissue: | Ovary |
| Frozen Sample ID: | FR5B33BD9F |
| Case ID: | CU0000011710 |
| Tissue of Origin: | Ovary: left |
| Site of Finding: | Ovary: left |
| Appearance: | Tumor |
| Sample Diagnosis (from Pathology Verification): | Tumor of ovary, serous, borderline |
| Normal: | 0% |
| Lesional: | 0% |
| Tumor: | 30% |
| Tumor Hypo/Acellular Stroma: | 50% |
| Tumor Hypercellular Stroma: | 20% |
| Necrosis: | 0% |
| Pathology Verification notes from H&E review: | Tumor Stroma (Cellular): Fibroblastic cells; Tumor Stroma (Hypo/Acellular): Fibrosis |
| CASE Diagnosis (from medical center path report): | Tumor of ovary, serous, borderline |
| Age: | 54 |
| Gender: | Female |
| Tumor Grade: | AJCC GB: Borderline malignancy |

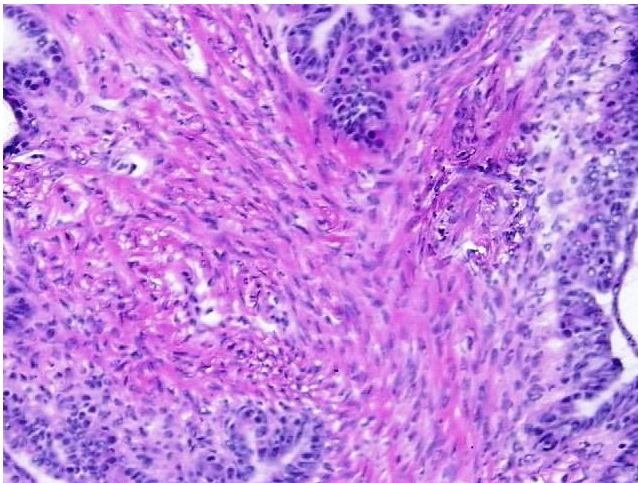


[View online »](#)

| | |
|------------------------------|---|
| Minimum Stage Grouping: | IIIA |
| T (Extent of Primary Tumor): | pT3a |
| N (Lymph node metastasis): | pN0 |
| M (Distant metastasis): | pMX |
| Storage: | Store frozen tissue blocks at -80°C. |
| Stability: | Frozen tissue blocks are stable for at least one year from date of shipping when stored at -80°C. |

Product images:

4x Image



20x Image