

## Product datasheet for **CB639380**

### Frozen Tissue Blocks, Kidney

#### Product data:

|   |   |
|---|---|
| Product Type:                                     | Frozen Blocks                               |
| Disease State:                                    | Cancer                                      |
| Diagnosis Category:                               | Renal Cell Carcinoma                        |
| Tissue:   | Kidney                                      |
| Frozen Sample ID:                                 | FR5B33F667                                  |
| Case ID:  | CU0000011540                                |
| Tissue of Origin:                                 | Kidney                                      |
| Site of Finding:                                  | Kidney                                      |
| Appearance:                                       | Tumor                                       |
| Sample Diagnosis (from Pathology Verification):   | Carcinoma of kidney, renal cell, clear cell |
| Normal:   | 0%  |
| Lesional:   | 0%  |
| Tumor:  | 30%   |
| Tumor Hypo/Acellular Stroma:                      | 0%  |
| Tumor Hypercellular Stroma:                       | 25%   |
| Necrosis:   | 45%   |
| CASE Diagnosis (from medical center path report): | Carcinoma of kidney, renal cell, clear cell |
| Age:  | 62  |
| Gender:   | Male  |
| Tumor Grade:                                      | Fuhrman G4: Nuclei bizarre and multilobated |
| Minimum Stage Grouping:                           | III   |



[View online »](#)

T (Extent of Primary Tumor): pT3a

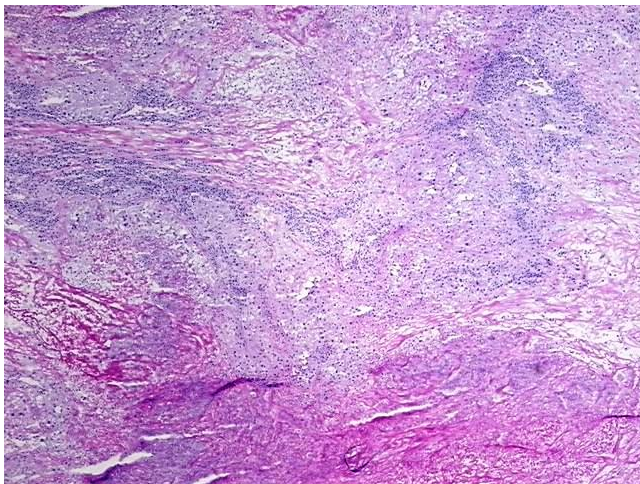
N (Lymph node metastasis): pN1

M (Distant metastasis): pMX

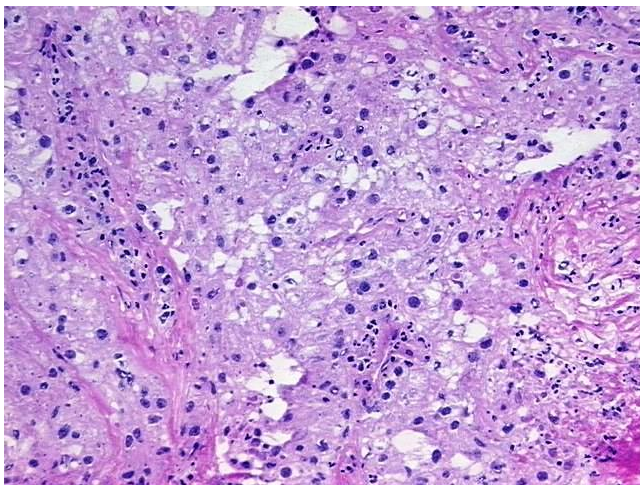
Storage: Store frozen tissue blocks at -80°C.

Stability: Frozen tissue blocks are stable for at least one year from date of shipping when stored at -80°C.

### Product images:



4x Image



20x Image