

Product datasheet for **CB636119**

Frozen Tissue Blocks, Colon: right

Product data:

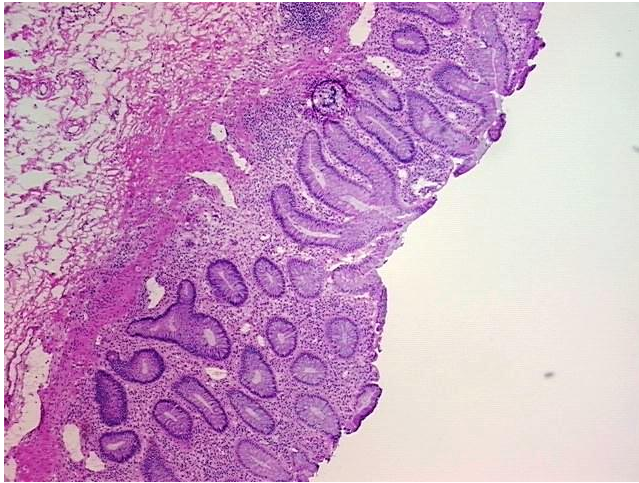
| | |
|---|---------------------------------------|
| Product Type: | Frozen Blocks |
| Disease State: | Other Disease |
| Diagnosis Category: | Inflammatory Bowel Disease (IBD) |
| Tissue: | Colon |
| Frozen Sample ID: | FR0002D27E |
| Case ID: | CU0000011002 |
| Tissue of Origin: | Colon: right |
| Site of Finding: | Colon: right |
| Appearance: | Lesion |
| Sample Diagnosis (from Pathology Verification): | Colitis, ulcerative, chronic active |
| Normal: | 0% |
| Lesional: | 100% |
| Tumor: | 0% |
| Tumor Hypo/Acellular Stroma: | 0% |
| Tumor Hypercellular Stroma: | 0% |
| Necrosis: | 0% |
| Pathology Verification notes from H&E review: | 35% mucosa, 20% submucosa, 45% muscle |
| CASE Diagnosis (from medical center path report): | Colitis, ulcerative, chronic active |
| Age: | 40 |
| Gender: | Female |
| Storage: | Store frozen tissue blocks at -80°C. |



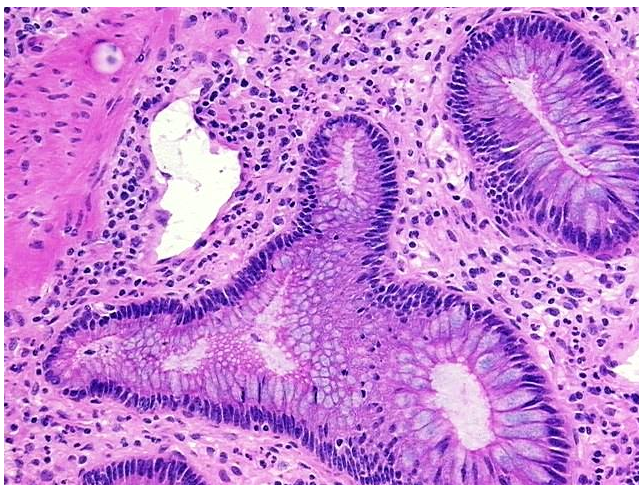
[View online »](#)

Stability: Frozen tissue blocks are stable for at least one year from date of shipping when stored at -80°C.

Product images:



4x Image



20x Image