

Product datasheet for **CB635736**

Frozen Tissue Blocks, Thyroid gland

Product data:

| | |
|---|---|
| Product Type: | Frozen Blocks |
| Disease State: | Normal |
| Diagnosis Category: | Normal |
| Tissue: | Thyroid gland |
| Frozen Sample ID: | FR0002BB92 |
| Case ID: | CU0000010958 |
| Tissue of Origin: | Thyroid gland |
| Site of Finding: | Thyroid gland |
| Appearance: | Normal |
| Sample Diagnosis (from Pathology Verification): | Within normal limits |
| Normal: | 100% |
| Lesional: | 0% |
| Tumor: | 0% |
| Tumor Hypo/Acellular Stroma: | 0% |
| Tumor Hypercellular Stroma: | 0% |
| Necrosis: | 0% |
| Pathology Verification notes from H&E review: | 70% Thyroid follicles, 30% Fibrous stroma |
| CASE Diagnosis (from medical center path report): | Carcinoma of thyroid, follicular |
| Age: | 38 |
| Gender: | Female |
| Tumor Grade: | n/a |



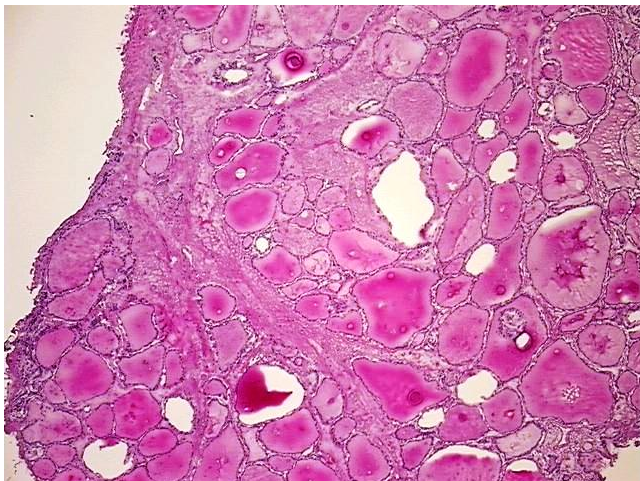
[View online »](#)

Minimum Stage
Grouping: n/a

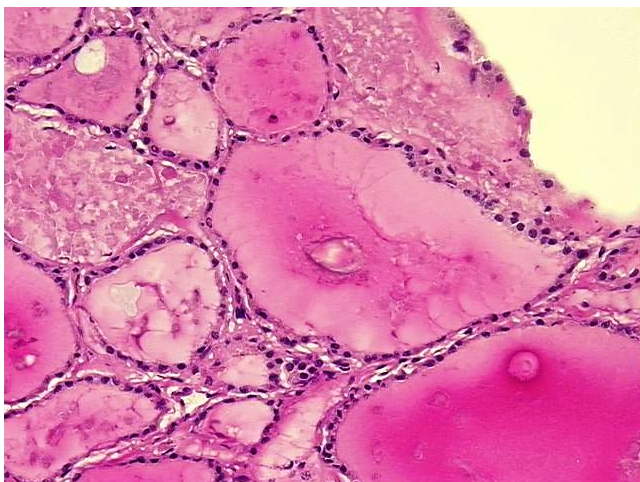
Storage: Store frozen tissue blocks at -80°C.

Stability: Frozen tissue blocks are stable for at least one year from date of shipping when stored at -80°C.

Product images:



4x Image



20x Image