

Product datasheet for **CB634495**

Frozen Tissue Blocks, Liver

Product data:

Product Type:	Frozen Blocks
Disease State:	Normal
Diagnosis Category:	Normal
Tissue:	Liver
Frozen Sample ID:	FR00028CCA
Case ID:	CU0000009370
Tissue of Origin:	Liver
Site of Finding:	Liver
Appearance:	Normal
Sample Diagnosis (from Pathology Verification):	Within normal limits
Normal:	100%
Lesional:	0%
Tumor:	0%
Tumor Hypo/Acellular Stroma:	0%
Tumor Hypercellular Stroma:	0%
Necrosis:	0%
Pathology Verification notes from H&E review:	85% lobules, 15% triads
CASE Diagnosis (from medical center path report):	Carcinoma of kidney, renal cell, clear cell, metastatic
Age:	51
Gender:	Male
Tumor Grade:	n/a



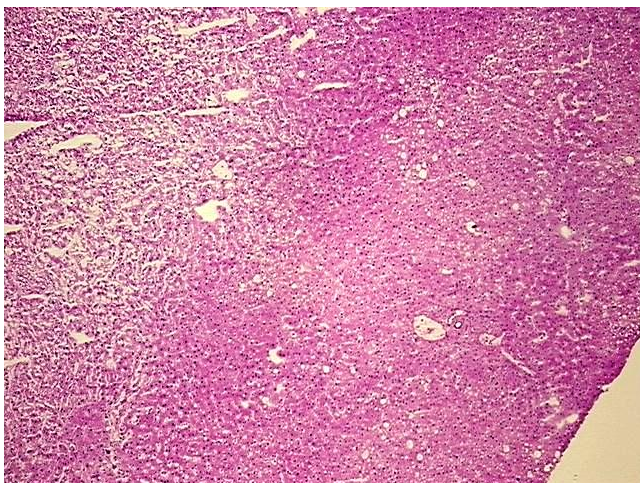
[View online »](#)

Minimum Stage
Grouping: n/a

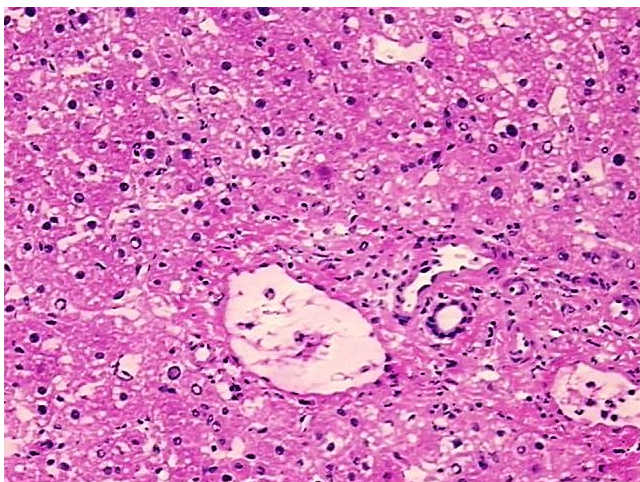
Storage: Store frozen tissue blocks at -80°C.

Stability: Frozen tissue blocks are stable for at least one year from date of shipping when stored at -80°C.

Product images:



4x Image



20x Image