

Product datasheet for **CB633341**

Frozen Tissue Blocks, Ovary: left

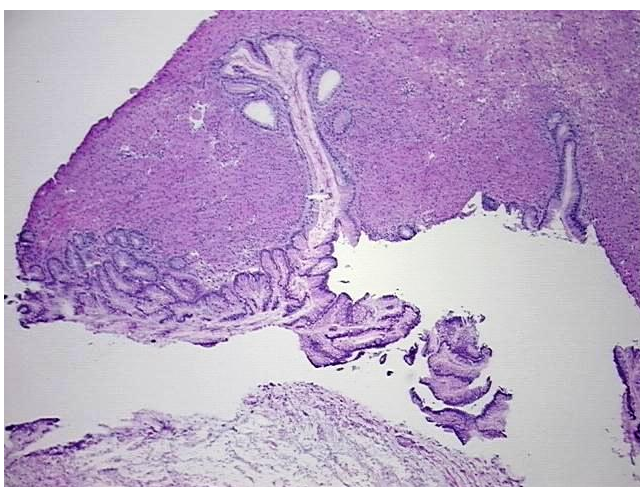
Product data:

Product Type:	Frozen Blocks
Disease State:	Other Disease
Diagnosis Category:	Borderline Ovarian Tumor
Tissue:	Ovary
Frozen Sample ID:	FR0002F664
Case ID:	CU0000006911
Tissue of Origin:	Ovary: left
Site of Finding:	Ovary: left
Appearance:	Tumor
Sample Diagnosis (from Pathology Verification):	Tumor of ovary, mucinous, borderline
Normal:	0%
Lesional:	0%
Tumor:	20%
Tumor Hypo/Acellular Stroma:	55%
Tumor Hypercellular Stroma:	20%
Necrosis:	5%
Pathology Verification notes from H&E review:	Tumor Stroma (Hypo/Acellular): Mucin
CASE Diagnosis (from medical center path report):	Tumor of ovary, mucinous, borderline
Age:	49
Gender:	Female
Tumor Grade:	AJCC GB: Borderline malignancy

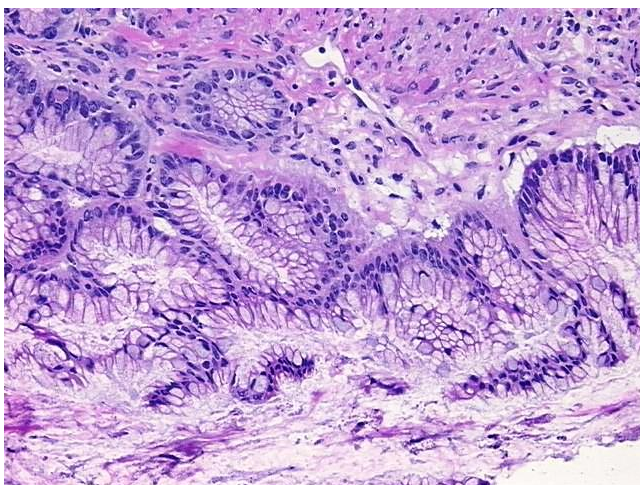


[View online »](#)

Minimum Stage Grouping:	IIIA
T (Extent of Primary Tumor):	pT3a
N (Lymph node metastasis):	pNX
M (Distant metastasis):	pMX
Storage:	Store frozen tissue blocks at -80°C.
Stability:	Frozen tissue blocks are stable for at least one year from date of shipping when stored at -80°C.

Product images:

4x Image



20x Image